



ERZURUM 2011
winter universiade

TRANSPORTATION GUIDE

Table of Contents

TRANSPORTATION SERVICES OVERVIEW.....	3
1. Introduction.....	4
1.1 General Information about Transportation Services.....	4
1.2 EWU 2011 Transportation Committee.....	5
1.3 Distribution of Tasks Scheme Of Transportation Committee.....	6
1.4 Main Destinations.....	7
1.5 Routes.....	8
1.6 Bus Stations and Parking Lots.....	9
1.7 Terminals.....	9
2. Transportation Vehicles.....	9
2.1 Vehicle Allocation.....	9
2.2 Vehicle Pool.....	11
2.3 Taxis.....	11
2.4 Procurement of Extra Vehicles.....	11
2.5 Vehicle Licenses.....	11
3. Transportation System Process.....	11
3.1 Principles of Transportation Services.....	11
3.2 Transportation Services for Arrivals and Departures.....	12
3.3 Transportation Services For Individual Sports.....	12
3.4 Transportation Services For Team Sports.....	13
3.5 Transportation Services For Officials and Volunteers.....	13
3.6 Transportation Services For Spectators.....	13
3.6.1 Public Transportation Vehicles passing by Competition Venues; Their Routes, Numbers and Schedule.....	14
4. Transportation Among Main Destinations.....	15
4.1 Transportation from the Athletes' Village to Venues.....	15
4.2 Transportation from the Athletes' Village to Stadium.....	18
4.3 Transportation from Hotels to Stadium.....	18
4.4 Transportation Between City Center and the Athletes' Village.....	18
5. Transportation Schedules During Competitions.....	18
6. Transportation for the Opening and Closing Ceremonies.....	58
7. Traffic Control and Transportation Security.....	58
TRANSPORTATION SERVICES for REFEREES & JUDGES.....	60
1. Transportation Services for Referees and Judges.....	61
2. Transportation Services.....	61
3. Arrivals.....	61
4. Principles of Transportation Services.....	61
5. Transportation for Opening & Closing Ceremonies.....	62
6. Departures.....	62
7. Transportation schedule for Referees and Judges.....	62
TRANSPORTATION SERVICES for MEDIA MEMBERS.....	72
1. Transportation Services for Media Members.....	73
2. Main Transportation Points.....	73
3. Transportation Information.....	73
4. Departures.....	73
5. Transportation Schedule for Media Members.....	74

Transportation Services Overview

1. Introduction
2. Transportation Vehicles
3. Transportation System Process
4. Transportation Among Main Destinations
5. Transportation Schedules During Competitions
6. Transportation for the Opening and Closing Ceremonies
7. Traffic Control and Transportation Security

1. Introduction

1.1 General Information About Transportation Services

Erzurum, which has 800.000 populations, is one of the eastern provinces of Turkey. There are 5 Buses operating consistently between airport and the city center, and in addition to the Buses providing transportation among the counties, there are also 26 Bus routes, 150 Buses, 6 of which are articulated Buses, 100 miniBuses and 640 taxis. Besides, an airport for international flights, a Bus station and a train station are available.

Erzurum International Airport with 2 million passengers capacity per annum has 7 planes capacity at the same time. This will be doubled during the competitions. In the airport, 70.000 passengers are carried by the mutual 65+65 flights per week.

During the competitions, sufficient number of extra flights will be provided with the special flight programmes from Istanbul and Ankara to Erzurum.

You can see the flight plan of Erzurum Airport below:

CURRENT SITUATION				
Regular Flights Per Week	Number of Carried Passenger Per Week	Number of Carried Passenger Per Month	Maximum Number of Carried Passenger Per Year	Flights (To Be Added) To Be Planned
98	23.400	93.600	2. 000.000	It will be decided according to the number of participating countries and officials.

By the force of OC's stipulation with FISU, Erzurum Airport has been opened for international customs; and by this means, it gained an international airport statue.

The Ministry of Transportation and the Undersecretariat of Customs came to a mutual agreement on subject matters above.

After the negotiation with Turkish Airlines, it has been stated that there will be support on increasing flight number connecting service with Istanbul-Ankara-Erzurum and charter flights.

Officials to serve at the airport has been assigned by the Undersecretariat of Customs.

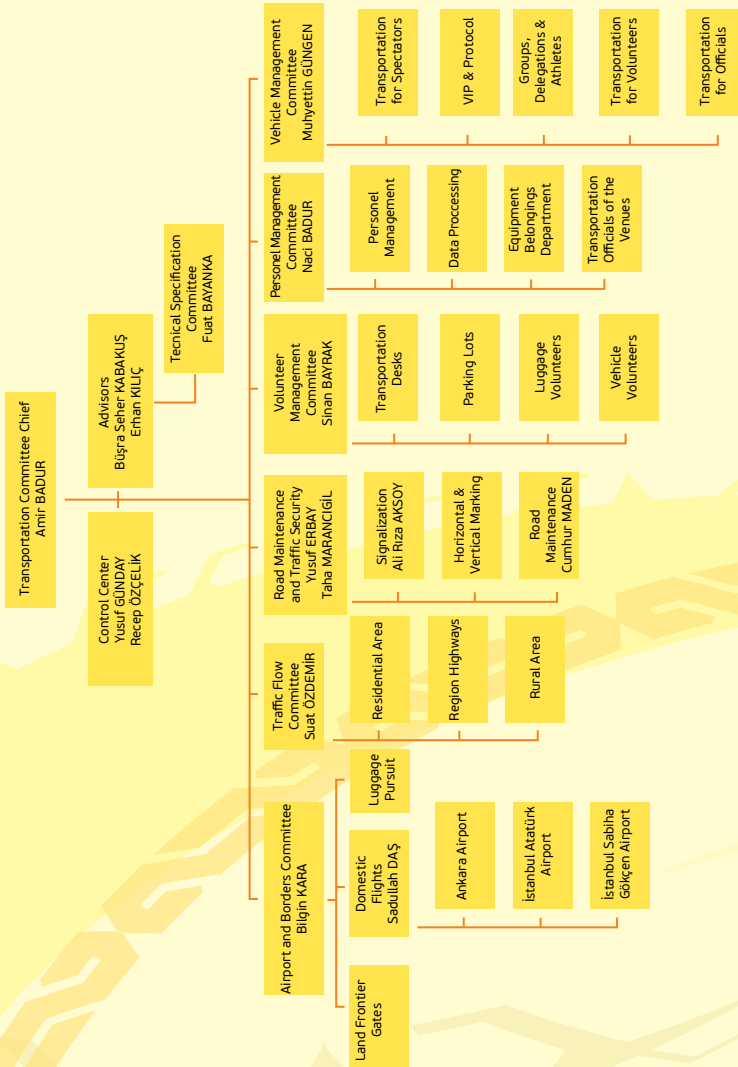
1.2 EWU 2011 Transportation Committee

Erzurum 2011 Organizing Committee established “Transportation Department” to provide the best coordinated and organized transportation service for the 25th Winter Universiade, Erzurum 2011. The basic function of this department is to prepare a transportation plan in compliance with the Minimum Requirements of FISU and to establish the essential organization during the Winter Universiade, Erzurum 2011 which will be held on January 22th-February 8th. The followings are the basic services of this committee:

- To provide transportation services for all athletes, VIP technical officials, media members, officials and the whole participants and spectators; and to provide free transportation services for the guests of OC,
- To collaborate with administration departments for ensuring the coordinated transportation of Winter Universiade and citizens and to provide the best transportation organization,
- To negotiate with Turkish Airlines about the points of discount tickets and flights to Erzurum,
- To set standards about allocated vehicles and drivers for the 25th Winter Universiade, Erzurum 2011; to prepare programmes for shuttle Buses and to allocate vehicles,
- To prepare private licenses for the allocated vehicles in cooperation with the Accreditation Center; to prepare and deliver transportation manuals for the 25th Winter Universiade, Erzurum 2011,
- To prepare operation schemes, programmes and schedules for the vehicles allocated for the Winter Universiade,
- To form traffic routes; to plan and manage transportation for all activities,
- To prepare traffic control plans for the basic areas and to collaborate with related departments to provide traffic flow,
- To prepare carriageways among all centre points during the competitions; to design, produce and set up direction signs on these carriageways and signs for Bus stations; to build up parking places and to supply necessary equipment,
- To provide transportation services for arrivals to Erzurum and departures from Erzurum; to book return flights for all delegations,
- To provide professional training and traffic security training for all the officials including drivers, executive officials, volunteers having a role on transportation services.

1.3 Distribution of Tasks Scheme Of Transportation Committee

On the purpose of managing the various vehicles in an effective way, Transportation Control Center will be established under the presidency of General Director of Transportation Department before the competitions and this center will take on the tasks of general administering of transportation services, decision making about the main activities and running these decisions. EWU 2011 distribution of tasks scheme of Transportation Committee is below:



1.4 Main Destinations

- From the Athletes' Village to the Airport
- From the Athletes' Village to City Center
- From the Athletes' Village to Kandilli
- From the Athletes' Village to Konaklı
- From the Athletes' Village to Curling Venue
- From the Athletes' Village to Short Track Venue
- From the Athletes' Village to High boards
- From the Athletes' Village to Ice Hockey Venue
- From the Athletes' Village to Palandöken Venues
- From the Athletes' Village to Medals Ceremony Area
- From the Athletes' Village to Media Hotel
- From the Athletes' Village to FISU Hotel
- From the Athletes' Village to Judge Hotel
- From the Athletes' Village to VIP Hotel

The following transportation services will be provided during EWU 2011:

- Transportation services from Erzurum Airport to the Accreditation Center and accommodation areas,
- Transportation services between accommodation areas and the other venues (Athletes' Village, Training and Competition Venues),
- Transportation services between the Athletes' Village and the other venues (Accommodation Areas, Training and Competition Venues),
- Transportation Services for round-trip among the Athletes' Village, Accommodation Areas, City Center and Cemal Gürsel Stadium for the Opening and Closing Ceremonies,
- Transportation services for round-trip among the Athletes' Village, Accommodation Areas & City Center and Ice Sports Venues & Double Minarets for Medal Ceremonies,
- Transportation services from the Athletes' Village and accommodation areas to Erzurum Airport for departures,
- Shuttle Bus services for every 30 minutes,
- Buses from the Athletes' Village to competition venues will service in accordance with the numbers of the athletes and teams during the competitions.

1.5 Routes

Routes from Competition areas to other areas have been designated; time and distances have been arranged and this information has been scheduled:

	Kiremetliktepe	3, 2km	12, 9km	10, 6km	24, 9km	46, 4km	9, 6km	5, 9km	15, 9km	16km	5, 5km	-
	Coordination Center	3, 5km	12, 4km	10, 10km	18, 8km	46, 6km	9, 8km	6, 1km	16, 1km	16, 2km	-	00.15
	Airport	12, 6km	20km	17, 7km	35km	34km	18, 8km	10, 4km	21, 1km	-	00.50	00.35
	Media Hotel	12, 6km	20km	17, 7km	35km	30, 5km	16, 7km	10km	-	00.50	00.40	00.35
	Ice Hokey Cemal Gursel Stadium	2, 6km	10km	7, 7km	24, 9km	40, 5km	6, 7km	-	00.20	00.30	00.25	00.25
	Curling	6, 3km	10, 7km	8, 4km	28, 7km	46, 2km	-	00.25	00.40	00.50	00.30	0.30
	Kandilli	43km	50, 5km	48, 2km	65, 4km	-	01.30	01.20	01.00	01.10	01.30	01.30
	Konaklı	22, 3km	31, 9km	29, 6km	-	02.30	01.20	01.00	01.30	01.30	00.45	01.00
	FISU Hotel	7, 3km	2, 3km	-	01.25	01.55	00.25	00.25	00.55	00.45	00.30	00.30
	Dedeman Palandoken	9, 6km	-	00.05	01.30	02.00	00.30	00.30	01.00	00.50	00.35	00.35
	Athletes' Village	-	00.30	00.25	01.00	01.35	00.25	00.08	00.40	00.35	00.15	00.15
Athletes' Village												
Dedeman Palandoken												
FISU Hotel												
Konaklı												
Kandilli												
Curling												
Ice Hockey Cemal Gursel Stadium												
Media Hotel												
Airport												
Coordination Center												
Kiremitliktepe												

Palandöken Region: Snowboarding, Freestyle Skiing

Kandilli Region: Cross Country Skiing, Nordic Combined, Biathlon

Konaklı: Alpine Skiing

Kiremitliktepe: Ski Jumping, Figure Skating, Short Track Speed Skating, Nordic Combined

Mecidiye: Curling

Cemal Gürsel Stadium: Ice Hockey

Cemal Gürsel Stadium: Opening & Closing Ceremony

1.6 Bus Stations and Parking Lots

Bus stations have been planned in all places; designs and places of Bus stations have been determined. And the parking lots in each competition and training venue including the stadium, where opening and closing ceremonies will be held, have been designed and formed. Entry priorities to these parking areas have been planned. Besides, private parking lots will be formed out of competition venues and residential areas.

1.7 Terminals

The main terminal is at the Athletes' Village and ready for use. Terminal area is located near-by the entrance of the Athletes' Village. As a start and finish point of ring services (shuttle services), it is also a departure and destination point. Besides, the vehicles allocated to delegations will use this area as boarding and drop-off points.

2 Transportation Vehicles

2.1 Vehicle Allocation

The size of vehicle fleet has been determined considering the peak Busy hours, and technical features and conditions of vehicles have been indicated on corresponding specification. Vehicle allocation for the Winter Universiade, Erzurum 2011 will be conducted by predicating the related arrangements of FISU and requirements of the competition on. Transportation services will be provided for delegations, committees, media members, referees, judges and all other participants by various types and sizes of vehicles (Buses, miniBuses, Midibuses, cars...), 142 of which belong to FISU. In addition, vehicles such as tow trucks, vans etc. will be provided if the need arises.

25th WINTER UNIVERSIADE, ERZURUM 2011 ALLOCATED VEHICLE LIST

	Bus	Midibus	MiniBus	Pick-up 4x4	Cars	VIP	Panel van	Mini Loader	Forklift	Tow Truck	Total
Vehicles for FISU			2	10	105	20	5				142
Vehicles for Referees and Judges			10	2	5		2				19
Vehicles for Delegations (including Service Buses and shuttle Buses)	95	40	10	2	60		30				217
Vehicles for Sports Committees				10			10				20
Vehicles for Media Members			10		20		2				32
Vehicles for Doping-Control			2		8		2				12
Vehicles for the Organizing Committee (including volunteers and personnel)	40		20	40	70	10	2	7	1	10	210
Total	135	40	54	64	268	30	53	7	1	10	662
Vehicles Supplement (for Vehicle pool)	5	5	5	5	5		2				
Total	140	45	59	69	273	30	55	7	1	10	689

List of Possible Vehicles Needed

2.2 Vehicle Pool

Vehicle pool will be brought into use after the discussions between control center and transportation desks if requested. In accordance with the accreditation priorities, vehicles will be provided from the vehicle pool for people wishing to participate in the activities.

2.3 Taxis

There are 640 taxis in the city. Sufficient number of these taxis will be kept available near venues during the competitions. Besides, there will be taxi station near the Athletes' Village.

2.4 Procurement of Extra Vehicles

Delegations are responsible for informing transportation desks about their requests of vehicle via their attaches 24 hours in advance. Accordingly, Transportation Committee ensures that all the vehicles will be ready in time.

Thanks to car rental companies, Transportation Committee offers reservation of renting a car service. Delegations who want to rent a car except for the organization have to inform the committee 24 hours in advance. Vehicles will be booked by appealing to Transportation Desks.

2.5 Vehicles Licenses

For the 25th Winter Universiade Erzurum 2011, vehicles licenses will be provided by Security Department and the Accreditation Center. The licenses of allocated vehicles will be taken from Accreditation Center and will be delivered by Transportation Department.

3 Transportation System Process

3.1 Principles of Transportation Services

- Transportation service will be provided to everyone, accredited by Erzurum OC.
- Transportation Services will be provided between January 27th and February 6th. However; transportation services will be provided for the arrivals before these dates and for the departures after these dates.
- During the Winter Universiade, free transportation service will be provided for trainings, competitions and the other official activities.
- Transportation system, which has been planned, interconnects Erzurum Airport, accommodation areas, training and competition venues and all the other areas, approved by Erzurum OC.
- Transportation services will be offered considering the participants' titles and necessary arrangements will be made conforming to the competition schedules.

- 'Rent a car' services shall be available.
- Courier services will be provided by Transportation Committee through vans rented from private companies or pickup trucks ensured from municipality for a fee.
- Transportation manuals including competition programme and related transportation information will be prepared for all participant groups (Athletes, Administrators, VIP, Media Members, Umpires).
- There will be transportation info desks with staff competent on foreign language in all venues and hotels. There will be transportation manuals and maps at these info desks. Besides, information about transportation can be obtained from Universiade Call Center which will serve during competitions.

3.2 Transportation Services for Arrivals and Departures

- Transportation Committee will provide transportation of FISU members, referee and judges and VIP guests from Erzurum Airport to accommodation areas or accreditation centers.

FISU Family	Number of Vehicles
Executive Committee members, Chairmen and FISU Committees	30
FISU members and personnel	90
Members of the other committees and VIPs	20
International Control Committee	2

- All guests will be welcomed right after their departures to Erzurum Airport and they will be led by the info desk at the airport. To be able to carry out these, sufficient number of volunteers will be ready there.
- The guests will be firstly taken to Accreditation Center located in Atatürk University for their accreditation process and later to accommodation Areas. Transportation will be provided by Buses, Midibuses and cars.
- Transportation services for departures will be provided between Athletes' Village & Accommodation Areas and Erzurum Airport. VIP members who request for private vehicles should consider the required time for the completion of the procedures for international flights. They should fill vehicle request form and later submit it.
- More information about departures can be given from attaches, info desks or call center.

3.3 Transportation Services For Individual Sports

There will be Buses among Athletes' Village, competition venues and hotels consistently. There will be separate services for Figure Skating and Short Track and Buses will be allocated for the other athletes. There will be private Bus services for the athletes who will compete in Kandilli and Konaklı.

3.4 Transportation Services For Team Sports

The following vehicles will be allocated for Ice Hockey, Synchronized Figure Skating and Curling teams:

- 18 (eighteen) Buses for Ice Hockey teams,
- 20 (twenty) miniBuses for Curling teams,
- 5 (five) Buses for Synchronized Figure Skating teams.

These vehicles will be allocated to provide transportation of those teams to Athletes' Village after they arrive to the city between the dates January 22th-February 8th. Heads of delegations will be informed about the changes of transportation programme and vehicles via Transportation Info Desks. Attaches will be given to each team.

Number Of Delegations	Number Of Vehicles
5-25 persons	1
26-50 persons	2
51-100 persons	3
101-150 persons	4
151-200 persons	5
201-250 persons	6
251-300 persons	7
More than 300	8

3.5 Transportation Services For Personnel and Volunteers

Personnel and volunteers will be transported by service Buses in parallel with the requirements of Transportation Committee. Besides, transportation services will also be provided by inner-city public transportation vehicles.

3.6 Transportation Services For Spectators

In addition to the service Buses for athletes, reinforcing services and Erzurum Metropolitan Municipality public transportation system will be bring into spectators use (in conformity with the competition schedule). There are sufficient number of public transportation vehicles in the city and thanks to the electronic fee collection system, second boarding within 40 minutes is free of charge. There will not be any problem on transportation of people. Furthermore, transportation of people from parking areas nearby the venues to the venues will be provided by Buses rented by Transportation Committee.

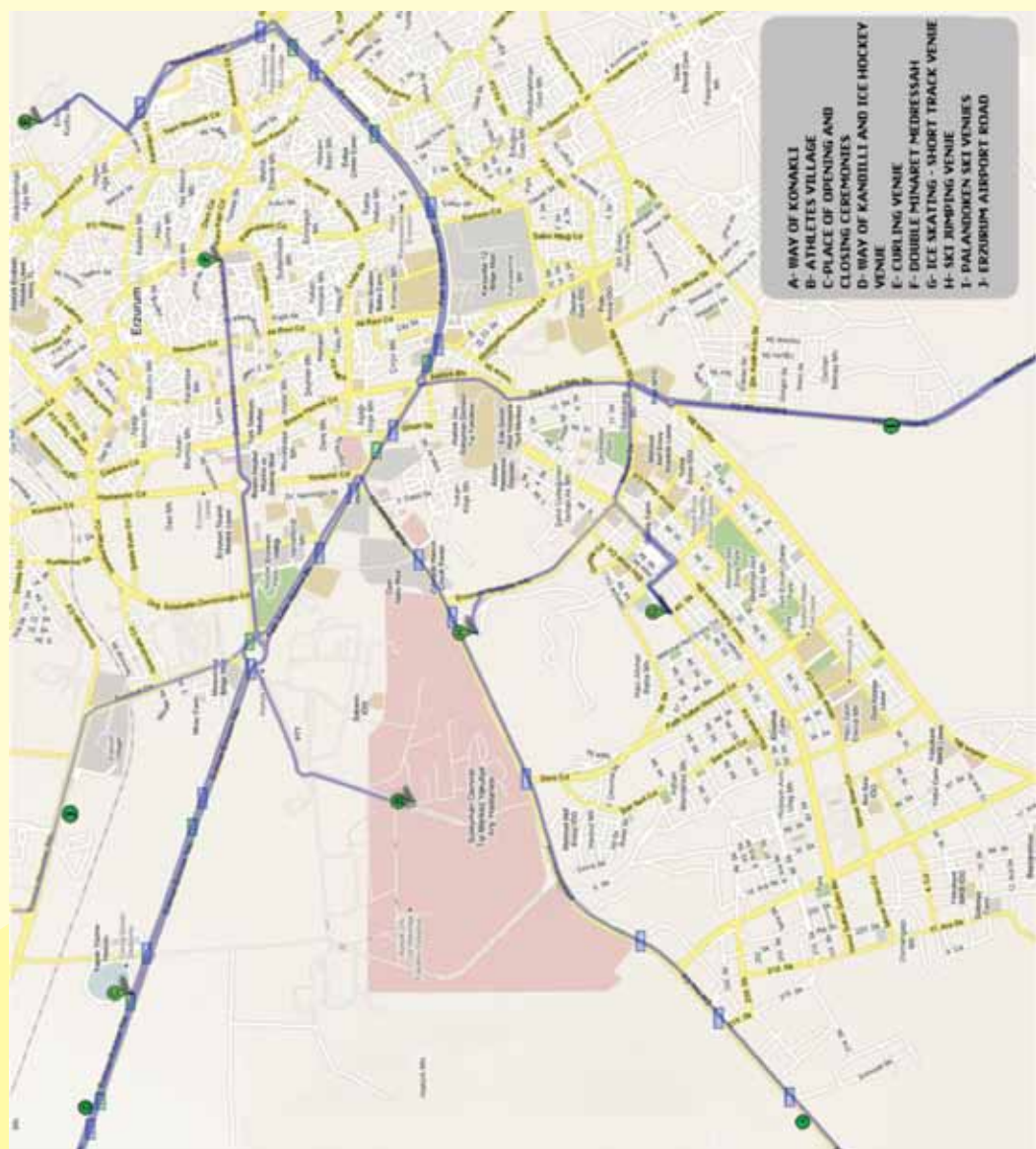
3.6.1 Public Transportation Vehicles passing by Competition Venues; Their Routes, Numbers and Schedule

No. of Lines	Line Title	No. of Vehicle	Arrival and Departure Points	Time	Sports Venues on that Line
1	B1	11	Ilca-City Center	00.00-00.10-00.20- 00.30-00.40-00.50 (in every 10 min)	Ice Hockey
2	B2	10	Dađaşkent-Gez. St.-Karayolları Toki-Yoncalık	In every 4 min	Ice Hockey
3	B3	10	Dađaşkent-City Center-Faculty Of Education-Karayolları TOKI-Yoncalık	In every 4 min	Ice Hockey
4	B5	1	Söğütöü Village-Dađaşkent-Gez St.-Yoncalık	06.30-08.15-10.00-13.45-15.45-17.45-20.00	Ice Hockey
5	B6	6	Y.Emre-Yenişehir-Yıldızkent-A.U.-Dađaşkent	From Dađaşkent & Kayayolu In every 20 min.	Ski Jumping, Ice Hockey, Athletes' Village, Figure Skating
6	B7	1	Ilca-Dađaşkent-Education Hosp.-Yıldızkent	Ilca	Highbords, Figure Skating
7	D1	2	Yoncalık-City Centre-M.Başı-M.EFendi St.	00.15-00.45 (quarter past and quarter to)	Highbords
8	G1	9	University-Yoncalık-Yunus Emre	In every 6 min.	Athletes' Village
9	G2	2	Yoncalık-Kombina-M.Başı-K.Yurdalan	00.05-00.25 and 00.35-00.45	
10	G3	10	Yenişehir-University-S.Bosna-Yoncalık-Gurudikapi	In every 7 min.	Highbords, Athletes' Village, Figure Skating
11	G5	7	Yoncalık-City Center Kayayolu	In every 9 min.	Snowboarding
12	G6	8	Yıldızkent-Yenişehir Üst-Yol-Kayayolu-City Center	In every 10 min.	Figure Skating
13	G7	16	Yıldızkent-Yenişehir Alt-Yol-City Center	In every 4 min.	Figure Skating
14	G8	4	Yoncalık- City Center-Dutcu Köyü	From Yoncalık in every 20 min.	Highbords
15	G9	8	Yıldızkent-Yenişehir Alt Yol—Yoncalık-Hilalcent	From Hilalcent & Yıldızkent in every 10 min.	Figure Skating
16	G10	5	Yoncalık-Gez St.-M.Başı-Yunus Emre-Küme E.	In every 15 min.	Highbords
17	G11	3	Yenişehir Alt Yol-Kongre Cad.-M.Başı-G. Kapı	In every 25 min.	Figure Skating
18	K1	2	Dađaşköy-City Center	00.00-00.30 (in every 30 min)	Highbords
19	K2	6	Ş.Paşa-Şih Village-Göğüs Hast-Education Hosp.Yıldızkent-A.Uni	In every 15 min	Highbords, Athletes' Village
20	K3	5	Hilalcent-Ş.Paşa-A.Uni-Yoncalık	In every 15 min.	Athletes' Village
21	K4	2	Yoncalık-Terminal-Çiftlik St.	00.00-00.30 (in every 30 min)	
22	K5	2	Yoncalık-M.Başı-Şehitler-Aziyaje St.	00.00-00.30 (in every 30 min)	Curfing, Highbords
23	K6	2	Yoncalık-M.Başı-Aziyaje St. Şehitler	00.15-00.45 (quarter past and quarter to)	Curfing, Highbords
24	K7	3	Ş.Paşa-Kombina St.-Menderes St-H.Başı-A.Uni.-Education Hosp.-Çayolu TOKI	In every 25 min.	Highbords, Athletes' Village
25	K8	2	Dumlu City Center	From Dumlu at the bottom of the hour	
26	Airport Services	5		According to landing and departure time	
27	Periodic Servicing & Extra vehicle				

4. Transportation Among Main Destinations

4.1 Transportation from the Athletes' Village to Venues

After the opening of the Athletes' Village, shuttle Buses will serve from determined start and finish points in the Athletes' Village. There will be Bus services to provide transportation for the participants to the terminal from where they will go accommodation areas, Athletes' Village, training and competition venues. These transportations will be provided by Midibuses. There will be arrangements about shuttle services considering the density of training and competition schedules. It will be available to get information about inner-village transportation, on-call requests, transportation to sport venues, vehicle parking licenses and the other activities from Transportation Services Information and Vehicle Request Centers which will be located in the center of the Athletes' Village. This center will service for 24 hours during the competitions.





- | | | |
|---|----------------------|-------------------------|
| PALANDÖKEN SKI VENUES ACCOMODATION AREA | KONAKLI VENUE | CEMAL GÜRSEL STADIUM |
| SHORT TRACK SPEED SKATING VENUE | MEDIA ACCOMODATION | AIRPORT |
| HIGHBOARDS | KANDILLI VENUES | MEDIA ACCOMODATION |
| ATHLETES' VILLAGE | ICE HOCKEY ARENA | DOUBLE MINARET MADRASAH |
| CURLING HALL | FIGURE SKATING VENUE | |

4.2 Transportation from the Athletes' Village to the Stadium (Ice Hockey)

Terminal is located nearby the entrance of the Athletes' Village. This terminal is start and finish points of the Athletes' Village shuttle services, and also an arrival and departure point of the transportation to sports venues and the other facilities. Besides, it is the boarding point and drop-off point of the vehicles allocated to the delegations.

There will be regular vehicles in every 30 minutes between the Athletes' Village and the venues from 08.00am till 24.00pm during the competitions.

4.3 Transportation from Hotels to Stadium (Ice Hockey)

There will be regular vehicles in every 30 minutes between Hotels and Stadium from 08.00am till 20.00pm.

4.4 Transportation Between Erzurum City Center and Athletes' Village

There will be regular vehicles in every 30 minutes between the Athletes' Village and Erzurum City Center from 08.00am till 20.00pm.

5. Transportation Schedule for Athletes and Officials

Alpine Skiing								
Date/Time	22.01.2011		23.01.2011		24.01.2011		25.01.2011	
	Athletes' Village	Venue	Athletes' Village	Venue	Athletes' Village	Venue	Athletes' Village	Venue
07.00	Bus27		Bus27		Bus27		Bus27	
07.30	Bus28		Bus28		Bus28		Bus28	
08.00	Bus29	Bus27	Bus29	Bus27	Bus29	Bus27	Bus29	Bus27
08.30	Bus30	Bus28	Bus30	Bus28	Bus30	Bus28	Bus30	Bus28
09.00	Bus27	Bus29	Bus27	Bus29	Bus27	Bus29	Bus27	Bus29
09.30		Bus30		Bus30		Bus30		Bus30
10.00		Bus27		Bus27		Bus27		Bus27
10.30								
11.00	Bus28		Bus28		Bus28		Bus28	
11.30								
12.00		Bus28		Bus28		Bus28		Bus28
12.30								
13.00	Bus29		Bus29		Bus29		Bus29	
13.30								
14.00		Bus29		Bus29		Bus29		Bus29
14.30								
15.00	Bus30		Bus30		Bus30		Bus30	
15.30								
16.00		Bus30		Bus30		Bus30		Bus30

Biathlon								
Date/Time	22.01.2011		23.01.2011		24.01.2011		25.01.2011	
	Athletes' Village	Venue	Athletes' Village	Venue	Athletes' Village	Venue	Athletes' Village	Venue
07.00	Bus38		Bus38		Bus38		Bus38	
07.30	Bus39		Bus39		Bus39		Bus39	
08.00	Bus40	Bus38	Bus40	Bus38	Bus40	Bus38	Bus40	Bus38
08.30	Bus41	Bus39	Bus41	Bus39	Bus41	Bus39	Bus41	Bus39
09.00	Bus38	Bus40	Bus38	Bus40	Bus38	Bus40	Bus38	Bus40
09.30		Bus41		Bus41		Bus41		Bus41
10.00		Bus38		Bus38		Bus38		Bus38
10.30								
11.00	Bus39		Bus39		Bus39		Bus39	
11.30								
12.00		Bus39		Bus39		Bus39		Bus39
12.30								
13.00	Bus40		Bus40		Bus40		Bus40	
13.30								
14.00		Bus40		Bus40		Bus40		Bus40
14.30								
15.00	Bus41		Bus41		Bus41		Bus41	
15.30								
16.00		Bus41		Bus41		Bus41		Bus41

Cross Country Skiing								
Date/Time	22.01.2011		23.01.2011		24.01.2011		25.01.2011	
	Athletes' Village	Venue	Athletes' Village	Venue	Athletes' Village	Venue	Athletes' Village	Venue
07.00	Bus52		Bus52		Bus52		Bus52	
07.30	Bus53		Bus53		Bus53		Bus53	
08.00	Bus54	Bus52	Bus54	Bus52	Bus54	Bus52	Bus54	Bus52
08.30	Bus55	Bus53	Bus55	Bus53	Bus55	Bus53	Bus55	Bus53
09.00	Bus52	Bus54	Bus52	Bus54	Bus52	Bus54	Bus52	Bus54
09.30		Bus55		Bus55		Bus55		Bus55
10.00		Bus52		Bus52		Bus52		Bus52
10.30								
11.00	Bus53		Bus53		Bus53		Bus53	
11.30								
12.00		Bus53		Bus53		Bus53		Bus53
12.30								
13.00	Bus54		Bus54		Bus54		Bus54	
13.30								
14.00		Bus54		Bus54		Bus54		Bus54
14.30								
15.00	Bus55		Bus55		Bus55		Bus55	
15.30								
16.00		Bus55		Bus55		Bus55		Bus55

Shuttle Bus services for trainings. (Athletes' Village-Kandilli, Konaklı)

Alpine Skiing						
Date/Time	26.01.2011		27.01.2011		28.01.2011	
	Athletes' Village	Venue	Athletes' Village	Venue	Athletes' Village	Venue
06.00						
06.30						
07.00	Bus34					
07.30	Bus35					
08.00	Bus36	Bus34	Bus27, Bus28, Bus29, Bus30, Bus31, Bus32, Bus33 (Team)		Bus27, Bus28, Bus29, Bus30, Bus31, Bus32, Bus33 (Team)	
08.30	Bus37	Bus35	Bus34		Bus34	
09.00	Bus34	Bus36	Bus35		Bus35	
09.30	Bus35	Bus37	Bus36	Bus34	Bus36	Bus34
10.00	Bus36	Bus34	Bus37	Bus35	Bus37	Bus35
10.30	Bus37	Bus35	Bus34	Bus36	Bus34	Bus36
11.00	Bus34	Bus36	Bus35	Bus37	Bus35	Bus37
11.30	Bus35	Bus37	Bus36	Bus34	Bus36	Bus34
12.00	Bus36	Bus34	Bus37	Bus35	Bus37	Bus35
12.30	Bus37	Bus35	Bus34	Bus36	Bus34	Bus36
13.00	Bus34	Bus36	Bus35	Bus37	Bus35	Bus37
13.30	Bus35	Bus37	Bus36	Bus34	Bus36	Bus34
14.00	Bus36	Bus34	Bus37	Bus35	Bus37	Bus35
14.30	Bus37	Bus35		Bus27, Bus28, Bus29, Bus30, Bus31, Bus32, Bus33 (Team), Bus36		Bus27, Bus28, Bus29, Bus30, Bus31, Bus32, Bus33 (Team), Bus36
15.00	Bus34	Bus36		Bus37		Bus37
15.30	Bus35	Bus37				
16.00	Bus27, Bus28, Bus36	Meeting Room, Bus34	Bus27, Bus28	Meeting Room	Bus27, Bus28	Meeting Room
16.30	Bus37	Bus35				
17.00	Bus34	Bus36				
17.30	Bus35	Bus37				
18.00	Bus36	Bus34				
18.30	Bus37	Bus27, Bus28, Bus35		Bus27, Bus28		Bus27, Bus28
19.00		Bus36				
19.30		Bus37				

Line A: Athletes' Village-Konaklı (Alpine Skiing)

Bus: 44+1 Capacity

Bus34, Bus35, Bus36 and Bus37 will provide transportation service between the Athletes' Village and Konaklı Region.

Alpine Skiing					
29.01.2011		30.01.2011		31.01.2011	
Athletes' Village	Venue	Athletes' Village	Venue	Athletes' Village	Venue
Bus27, Bus28, Bus29, Bus30, Bus31, Bus32, Bus33 (Team)		Bus27, Bus28, Bus29, Bus30, Bus31, Bus32, Bus33 (Team)		Bus27, Bus28, Bus29, Bus30, Bus31, Bus32, Bus33 (Team)	
Bus34		Bus34		Bus34	
Bus35		Bus35		Bus35	
Bus36	Bus34	Bus36	Bus34	Bus36	Bus34
Bus37	Bus35	Bus37	Bus35	Bus37	Bus35
Bus34	Bus36	Bus34	Bus36	Bus34	Bus36
Bus35	Bus37	Bus35	Bus37	Bus35	Bus37
Bus36	Bus34	Bus36	Bus34	Bus36	Bus34
Bus37	Bus35	Bus37	Bus35	Bus37	Bus35
Bus34	Bus36	Bus34	Bus36	Bus34	Bus36
Bus35	Bus37	Bus35	Bus37	Bus35	Bus37
Bus36	Bus34	Bus36	Bus34	Bus36	Bus34
Bus37	Bus35	Bus37	Bus35	Bus37	Bus35
	Bus27, Bus28, Bus29, Bus30, Bus31, Bus32, Bus33 (Team), Bus36		Bus27, Bus28, Bus29, Bus30, Bus31, Bus32, Bus33 (Team), Bus36		Bus27, Bus28, Bus29, Bus30, Bus31, Bus32, Bus33 (Team), Bus36
	Bus37		Bus37		Bus37
Bus27, Bus28	Meeting Room	Bus27, Bus28	Meeting Room	Bus27, Bus28	Meeting Room
	Bus27, Bus28		Bus27, Bus28		Bus27, Bus28

Alpine Skiing						
Date/Time	01.02.2011		02.02.2011		03.02.2011	
	Athletes' Village	Venue	Athletes' Village	Venue	Athletes' Village	Venue
06.00						
06.30						
07.00					Bus27, Bus28, Bus29, Bus30, Bus31, Bus32, Bus33 (Team)	
07.30					Bus34	
08.00	Bus27, Bus28, Bus29, Bus30, Bus31, Bus32, Bus33 (Team)		Bus27, Bus28, Bus29, Bus30, Bus31, Bus32, Bus33 (Team)		Bus35	
08.30	Bus34		Bus34		Bus36	Bus34
09.00	Bus35		Bus35		Bus37	Bus35
09.30	Bus36	Bus34	Bus36	Bus34	Bus34	Bus36
10.00	Bus37	Bus35	Bus37	Bus35	Bus35	Bus37
10.30	Bus34	Bus36	Bus34	Bus36	Bus36	Bus34
11.00	Bus35	Bus37	Bus35	Bus37	Bus37	Bus35
11.30	Bus36	Bus34	Bus36	Bus34	Bus34	Bus36
12.00	Bus37	Bus35	Bus37	Bus35	Bus35	Bus37
12.30	Bus34	Bus36	Bus34	Bus36	Bus36	Bus34
13.00	Bus35	Bus37	Bus35	Bus37	Bus37	Bus35
13.30	Bus36	Bus34	Bus36	Bus34	Bus34	Bus27, Bus28, Bus29, Bus30, Bus31, Bus32, Bus33 (Team), Bus36
14.00	Bus37	Bus35	Bus37	Bus35	Bus35	Bus37
14.30		Bus27, Bus28, Bus29, Bus30, Bus31, Bus32, Bus33 (Team), Bus36		Bus27, Bus28, Bus29, Bus30, Bus31, Bus32, Bus33 (Team), Bus36	Bus36	Bus34
15.00		Bus37		Bus37		Bus35
15.30						Bus36
16.00	Bus27, Bus28	Meeting Room	Bus27, Bus28	Meeting Room	Bus27, Bus28	Meeting Room
16.30						
17.00						
17.30						
18.00						
18.30		Bus27, Bus28		Bus27, Bus28		Bus27, Bus28

Line A: Athletes' Village-Konaklı (Alpine Skiing)

Bus: 44+1 Capacity

Bus34, Bus35, Bus36 and Bus37 will provide transportation service between Athletes' Village and Konaklı.

Alpine Skiing					
04.02.2011		05.02.2011		06.02.2011	
Athletes' Village	Venue	Athletes' Village	Venue	Athletes' Village	Venue
Bus27, Bus28, Bus29, Bus30, Bus31, Bus32, Bus33 (Team)		Bus27, Bus28, Bus29, Bus30, Bus31, Bus32, Bus33 (Team)		Bus27, Bus28, Bus29, Bus30, Bus31, Bus32, Bus33 (Team)	
Bus34		Bus34		Bus34	
Bus35		Bus35		Bus35	
Bus36	Bus34	Bus36	Bus34	Bus36	Bus34
Bus37	Bus35	Bus37	Bus35	Bus37	Bus35
Bus34	Bus36	Bus34	Bus36	Bus34	Bus36
Bus35	Bus37	Bus35	Bus37	Bus35	Bus37
Bus36	Bus34	Bus36	Bus34	Bus36	Bus34
Bus37	Bus35	Bus37	Bus35	Bus37	Bus35
Bus34	Bus36	Bus34	Bus36	Bus34	Bus36
Bus35	Bus37	Bus35	Bus37	Bus35	Bus37
Bus36	Bus34	Bus36	Bus34	Bus36	Bus34
Bus37	Bus35	Bus37	Bus35	Bus37	Bus35
Bus34	Bus27, Bus28, Bus29, Bus30, Bus31, Bus32, Bus33 (Team), Bus36	Bus34	Bus27, Bus28, Bus29, Bus30, Bus31, Bus32, Bus33 (Team), Bus36	Bus34	Bus27, Bus28, Bus29, Bus30, Bus31, Bus32, Bus33 (Team), Bus36
Bus35	Bus37	Bus35	Bus37	Bus35	Bus37
Bus36	Bus34	Bus36	Bus34	Bus36	Bus34
	Bus35		Bus35		Bus35
	Bus36		Bus36		Bus36
Bus27, Bus28	Meeting Room	Bus27, Bus28	Meeting Room		
	Bus27, Bus28		Bus27, Bus28		

Biathlon						
Date/ Time	26.01.2011		27.01.2011		28.01.2011	
	Athletes' Village	Venue	Athletes' Village	Venue	Athletes' Village	Venue
06.00						
06.30						
07.00	MD14, MD15, MD16, MD17, MD18, MD19, MD20 (Athlete)		MD14, MD15, MD16, MD17, MD18, MD19, MD20 (Athlete)		MD14, MD15, MD16, MD17, MD18, MD19, MD20 (Athlete)	
07.30						
08.00						
08.30	Bus38		Bus38		Bus38	
09.00	Bus39		Bus39		Bus39	
09.30	Bus40	Bus38	Bus40	Bus38	Bus40	Bus38
10.00	Bus41	Bus39	Bus41	Bus39	Bus41	Bus39
10.30	Bus42	Bus40	Bus42	Bus40	Bus42	Bus40
11.00	Bus38	Bus41	Bus38	Bus41	Bus38	Bus41
11.30	Bus39	Bus42	Bus39	Bus42	Bus39	Bus42
12.00	Bus40	Bus38	Bus40	Bus38	Bus40	Bus38
12.30	Bus41	Bus39	Bus41	Bus39	Bus41	Bus39
13.00	Bus42	Bus40	Bus42	Bus40	Bus42	Bus40
13.30	Bus38	Bus41	Bus38	Bus41	Bus38	Bus41
14.00	Bus39	Bus42	Bus39	Bus42	Bus39	Bus42
14.30	Bus40	Bus38	Bus40	Bus38	Bus40	Bus38
15.00	Bus41	Bus39	Bus41	MD14, MD15, MD16, MD17, MD18, MD19, MD20 (Athlete), Bus39	Bus41	MD14, MD15, MD16, MD17, MD18, MD19, MD20 (Athlete), Bus39
15.30	Bus42	MD14, MD15, MD16, MD17, MD18, MD19, MD20 (Athlete), Bus40		Bus40		Bus40
16.00		Bus41		Bus41		Bus41
16.30		Bus42				

Line B: Athletes' Village–Kandilli (Biathlon) Bus: 44+1 Capacity

MD: 26+1Capacity

Bus38, Bus39, Bus40, Bus41 and Bus42 will provide transportation service between the Athletes' Village and Kandilli.

Biathlon					
29.01.2011		30.01.2011		31.01.2011	
Athletes' Village	Venue	Athletes' Village	Venue	Athletes' Village	Venue
MD14, MD15, MD16, MD17, MD18, MD19, MD20 (Athlete)		MD14, MD15, MD16, MD17, MD18, MD19, MD20 (Athlete)		MD14, MD15, MD16, MD17, MD18, MD19, MD20 (Athlete)	
Bus38		Bus38		Bus38	
Bus39		Bus39		Bus39	
Bus40	Bus38	Bus40	Bus38	Bus40	Bus38
Bus41	Bus39	Bus41	Bus39	Bus41	Bus39
Bus42	Bus40	Bus42	Bus40	Bus42	Bus40
Bus38	Bus41	Bus38	Bus41	Bus38	Bus41
Bus39	Bus42	Bus39	Bus42	Bus39	Bus42
Bus40	Bus38	Bus40	Bus38	Bus40	Bus38
Bus41	Bus39	Bus41	Bus39	Bus41	Bus39
Bus42	Bus40	Bus42	Bus40	Bus42	Bus40
Bus38	Bus41	Bus38	Bus41	Bus38	Bus41
Bus39	Bus42	Bus39	Bus42	Bus39	Bus42
Bus40	Bus38	Bus40	Bus38	Bus40	Bus38
Bus41	Bus39	Bus41	MD14, MD15, MD16, MD17, MD18, MD19, MD20 (Athlete), Bus39	Bus41	MD14, MD15, MD16, MD17, MD18, MD19, MD20 (Athlete), Bus39
Bus42	MD14, MD15, MD16, MD17, MD18, MD19, MD20 (Athlete), Bus40		Bus40		Bus40
	Bus41		Bus41		Bus41
	Bus42				

Biathlon						
Date/ Time	01.02.2011		02.02.2011		03.02.2011	
	Athletes' Village	Venue	Athletes' Village	Venue	Athletes' Village	Venue
06.00						
06.30						
07.00	MD14, MD15, MD16, MD17, MD18, MD19, MD20 (Athlete)		MD14, MD15, MD16, MD17, MD18, MD19, MD20 (Athlete)		MD14, MD15, MD16, MD17, MD18, MD19, MD20 (Athlete)	
07.30						
08.00						
08.30	Bus38		Bus38		Bus38	
09.00	Bus39		Bus39		Bus39	
09.30	Bus40	Bus38	Bus40	Bus38	Bus40	Bus38
10.00	Bus41	Bus39	Bus41	Bus39	Bus41	Bus39
10.30	Bus42	Bus40	Bus42	Bus40	Bus42	Bus40
11.00	Bus38	Bus41	Bus38	Bus41	Bus38	Bus41
11.30	Bus39	Bus42	Bus39	Bus42	Bus39	Bus42
12.00	Bus40	Bus38	Bus40	Bus38	Bus40	Bus38
12.30	Bus41	Bus39	Bus41	Bus39	Bus41	Bus39
13.00	Bus42	Bus40	Bus42	Bus40	Bus42	Bus40
13.30	Bus38	Bus41	Bus38	Bus41	Bus38	Bus41
14.00	Bus39	Bus42	Bus39	Bus42	Bus39	Bus42
14.30	Bus40	Bus38	Bus40	Bus38	Bus40	Bus38
15.00	Bus41	Bus39	Bus41	MD14, MD15, MD16, MD17, MD18, MD19, MD20 (Athlete), Bus39	Bus41	MD14, MD15, MD16, MD17, MD18, MD19, MD20 (Athlete), Bus39
15.30	Bus42	Bus40		Bus40		Bus40
16.00	Bus38	MD14, MD15, MD16, MD17, MD18, MD19, MD20 (Athlete), Bus41		Bus41		Bus41
16.30		Bus42				
17.00		Bus38				

Line B: Athletes' Village-Kandilli (Biathlon)

Bus: 44+1 Capacity

MD: 26+1 Capacity

Bus38, Bus39, Bus40, Bus41 and Bus42 will provide transportation service between the Athletes' Village and Kandilli.

Biathlon			
04.02.2011		05.02.2011	
Athletes' Village	Venue	Athletes' Village	Venue
MD14, MD15, MD16, MD17, MD18, MD19, MD20 (Athlete)		MD14, MD15, MD16, MD17, MD18, MD19, MD20 (Athlete)	
Bus38		Bus38	
Bus39		Bus39	
Bus40	Bus38	Bus40	Bus38
Bus41	Bus39	Bus41	Bus39
Bus42	Bus40	Bus42	Bus40
Bus38	Bus41	Bus38	Bus41
Bus39	Bus42	Bus39	Bus42
Bus40	Bus38	Bus40	Bus38
Bus41	Bus39	Bus41	Bus39
Bus42	Bus40	Bus42	MD14, MD15, MD16, MD17, MD18, MD19, MD20 (Athlete), Bus40
Bus38	Bus41		Bus41
Bus39	Bus42		Bus42
Bus40	Bus38		
Bus41	MD14, MD15, MD16, MD17, MD18, MD19, MD20 (Athlete), Bus39 Bus40		
	Bus41		

Cross Country Skiing						
Date/Time	26.01.2011		27.01.2011		28.01.2011	
	Athletes' Village	Venue	Athletes' Village	Venue	Athletes' Village	Venue
06.00						
06.30						
07.00	Bus52, Bus53, Bus54, Bus55, Bus56, Bus57 (Athlete)					
07.30			Bus52, Bus53, Bus54, Bus55, Bus56, Bus57 (Athlete)			
08.00	Bus38		Bus38		Bus52, Bus53, Bus54, Bus55, Bus56, Bus57 (Athlete)	
08.30	Bus39		Bus39			
09.00	Bus40	Bus38	Bus40	Bus38	Bus38	
09.30	Bus41	Bus39	Bus41	Bus39	Bus39	
10.00	Bus42	Bus40	Bus42	Bus40	Bus40	Bus38
10.30	Bus38	Bus41	Bus38	Bus41	Bus41	Bus39
11.00	Bus39	Bus42	Bus39	Bus42	Bus42	Bus40
11.30	Bus40	Bus38	Bus40	Bus38	Bus38	Bus41
12.00	Bus41	Bus39	Bus41	Bus39	Bus39	Bus42
12.30	Bus42	Bus40	Bus42	Bus40	Bus40	Bus38
13.00	Bus38	Bus41	Bus38	Bus41	Bus41	Bus39
13.30	Bus39	Bus42	Bus39	Bus42	Bus42	Bus40
14.00	Bus40	Bus38	Bus40	Bus38	Bus38	Bus41
14.30	Bus41	Bus52, Bus53, Bus54, Bus55, Bus56, Bus57 (Athlete), Bus39	Bus41	Bus39	Bus39	Bus42
15.00		Bus40	Bus42	Bus40	Bus40	Bus38
15.30		Bus41	Bus38	Bus41	Bus41	Bus39
16.00			Bus39	Bus42	Bus42	Bus40
16.30			Bus40	Bus38	Bus38	Bus41
17.00			Bus41	Bus39	Bus39	Bus42
17.30			Bus42	Bus40	Bus40	Bus38
18.00			Bus38	Bus52, Bus53, Bus54, Bus55, Bus56, Bus57 (Athlete), Bus41	Bus41	Bus52, Bus53, Bus54, Bus55, Bus56, Bus57 (Athlete), Bus39
18.30				Bus42		Bus40
19.00				Bus38		Bus41

Line B: Athletes' Village–Kandilli (Cross Country Skiing)

Bus: 44+1 Capacity

Bus38, Bus39, Bus40, Bus41 and Bus42 will provide transportation service between the Athletes' Village and Kandilli.

Cross Country Skiing					
29.01.2011		30.01.2011		31.01.2011	
Athletes' Village	Venue	Athletes' Village	Venue	Athletes' Village	Venue
Bus52, Bus53, Bus54, Bus55, Bus56, Bus57 (Athlete)					
Bus38				Bus52, Bus53, Bus54, Bus55, Bus56, Bus57 (Athlete)	
Bus39					
Bus40	Bus38			Bus38	
Bus41	Bus39			Bus39	
Bus42	Bus40	Bus52, Bus53, Bus54, Bus55, Bus56, Bus57 (Athlete)		Bus40	Bus38
Bus38	Bus41			Bus41	Bus39
Bus39	Bus42	Bus38		Bus42	Bus40
Bus40	Bus38	Bus39		Bus38	Bus41
Bus41	Bus39	Bus40	Bus38	Bus39	Bus42
Bus42	Bus52, Bus53, Bus54, Bus55, Bus56, Bus57 (Athlete), Bus40	Bus41	Bus39	Bus40	Bus52, Bus53, Bus54, Bus55, Bus56, Bus57 (Athlete), Bus38
	Bus41	Bus42	Bus40		Bus39
	Bus42	Bus38	Bus41		Bus40
		Bus39	Bus42		
		Bus40	Bus38		
		Bus41	Bus39		
		Bus42	Bus40		
		Bus38	Bus41		
		Bus39	Bus42		
		Bus40	Bus38		
		Bus41	Bus39		
		Bus42	Bus52, Bus53, Bus54, Bus55, Bus56, Bus57 (Athlete), Bus40		
			Bus41		
			Bus42		

Cross Country Skiing						
Date/ Time	01.02.2011		02.02.2011		03.02.2011	
	Athletes' Village	Venue	Athletes' Village	Venue	Athletes' Village	Venue
06.00						
06.30						
07.00						
07.30						
08.00					Bus52, Bus53, Bus54, Bus55, Bus56, Bus57 (Athlete)	
08.30						
09.00	Bus52, Bus53, Bus54, Bus55, Bus56, Bus57 (Athlete)		Bus52, Bus53, Bus54, Bus55, Bus56, Bus57 (Athlete)		Bus38	
09.30					Bus39	Bus38
10.00	Bus38		Bus38		Bus40	Bus39
10.30	Bus39		Bus39	Bus38	Bus41	Bus40
11.00	Bus40	Bus38	Bus40	Bus39	Bus42	Bus52, Bus53, Bus54, Bus55, Bus56, Bus57 (Athlete), Bus41
11.30	Bus41	Bus39	Bus41	Bus40	Bus38	Bus42
12.00	Bus42	Bus40	Bus42	Bus41		Bus38
12.30	Bus38	Bus41	Bus38	Bus42		
13.00	Bus39	Bus42	Bus39	Bus38		
13.30	Bus40	Bus38	Bus40	Bus39		
14.00	Bus41	Bus39	Bus41	Bus40		
14.30	Bus42	Bus40	Bus42	Bus41		
15.00	Bus38	Bus41	Bus38	Bus42		
15.30	Bus39	Bus42	Bus39	Bus38		
16.00	Bus40	Bus38	Bus40	Bus39		
16.30	Bus41	Bus39	Bus41	Bus40		
17.00	Bus42	Bus40	Bus42	Bus41		
17.30	Bus38	Bus41	Bus38	Bus52, Bus53, Bus54, Bus55, Bus56, Bus57 (Athlete), Bus42		
18.00	Bus39	Bus52, Bus53, Bus54, Bus55, Bus56, Bus57 (Athlete), Bus42	Bus39	Bus38		
18.30		Bus38		Bus39		
19.00		Bus39		Bus38		Bus41

Line C: Athletes' Village-Mecidiye (Curling)

M: 17+1 Capacity

MD: 26+1 Capacity

MD: Midibus MD1 and MD2 will provide transportation service between the Athletes' Village and Mecidiye.

Cross Country Skiing			
04.02.2011		05.02.2011	
Athletes' Village	Venue	Athletes' Village	Venue
Bus52, Bus53, Bus54, Bus55, Bus56, Bus57 (Athlete)		Bus52, Bus53, Bus54, Bus55, Bus56, Bus57 (Athlete)	
Bus38		Bus38	
Bus39		Bus39	
Bus40	Bus38	Bus40	Bus38
Bus41	Bus39	Bus41	Bus39
Bus42	Bus40	Bus42	Bus40
Bus38	Bus41	Bus38	Bus41
Bus39	Bus42	Bus39	Bus42
Bus40	Bus38	Bus40	Bus38
Bus41	Bus39		Bus52, Bus53, Bus54, Bus55, Bus56, Bus57 (Athlete), Bus39
Bus42	Bus40		Bus40
Bus38	Bus41		
Bus39	Bus42		
Bus40	Bus38		
Bus41	Bus39		
Bus42	Bus40		
Bus38	Bus41		
Bus39	Bus42		
Bus40	Bus38		
	Bus52, Bus53, Bus54, Bus55, Bus56, Bus57 (Athlete), Bus39		
	Bus40		

Nordic Combined												
Date/ Time	26.01.2011		27.01.2011		28.01.2011		29.01.2011		30.01.2011		31.01.2011	
	Athletes' Village	Venues	Athletes' Village	Venues	Athletes' Village	Venues	Athletes' Village	Venues	Athletes' Village	Venues	Athletes' Village	Venues
06.00												
06.30	MD11, MD12, MD13 (Athletes)		MD11, MD12, MD13 (Athletes)				MD11, MD12, MD13 (Athletes)		MD11, MD12, MD13 (Athletes)		MD11, MD12, MD13 (Athletes)	
07.00					MD11, MD12, MD13 (Athletes)							
07.30												
08.00	Bus38		Bus38				Bus38		Bus38			MD11, MD12, MD13 (Athletes)
08.30	Bus39		Bus39		Bus38		Bus39		Bus39		Bus38	
09.00	Bus40		Bus40		Bus39		Bus40		Bus40		Bus39	
09.30	Bus41	Bus38	Bus41	Bus38	Bus40		Bus41	Bus38	Bus41	Bus38	Bus40	
10.00	Bus42	Bus39	Bus42	Bus39	Bus41	Bus38	Bus42	Bus39	Bus42	Bus39	Bus41	Bus39
10.30	Bus38	Bus40	Bus38	Bus40	Bus42	Bus39	Bus38	Bus40	Bus38	Bus40	MD11, MD12, MD13 (Athletes)	Bus40
11.00	Bus39	Bus41	Bus39	Bus41	Bus38	Bus40	Bus39	Bus41	Bus39	Bus41	Bus38	Bus41
11.30	Bus40	Bus42	Bus40	Bus42	Bus39	Bus41	Bus40	Bus42	Bus40	Bus42	Bus39	MD11, MD12, MD13 (Athletes)
12.00	Bus41	Bus38	Bus41	Bus38	Bus40	Bus42	Bus41	Bus38	Bus41	Bus38	Bus40	Bus38
12.30	Bus42	MD11, MD12, MD13 (Athletes), Bus39	Bus42	Bus39	Bus41	Bus38	Bus42	Bus39	Bus42	Bus39	Bus41	Bus39
13.00		Bus40	Bus38	Bus40	Bus42	Bus39	Bus38	Bus40	Bus38	Bus40	Bus42	Bus40
13.30		Bus41	Bus39	Bus41	Bus38	Bus40	Bus39	Bus41	Bus39	Bus41	Bus38	Bus41
14.00		Bus42	Bus40	Bus42	Bus39	Bus41	Bus40	Bus42	Bus40	Bus42	Bus39	Bus42
14.30			Bus41	Bus38	Bus40	Bus42	Bus41	Bus38	Bus41	Bus38	Bus40	Bus38
15.00			Bus42	Bus39	Bus41	Bus38	Bus42	Bus39	Bus42	Bus39	Bus41	Bus39
15.30				Bus40	Bus42	Bus39		Bus40		Bus40	Bus42	Bus40
16.00				MD11, MD12, MD13 (Athletes), Bus41		MD11, MD12, MD13 (Athletes), Bus40		MD11, MD12, MD13 (Athletes), Bus41		MD11, MD12, MD13 (Athletes), Bus41		Bus41
16.30				Bus42		Bus41		Bus42		Bus42		MD11, MD12, MD13 (Athletes), Bus42
17.00						Bus42						

Line B: Athletes' Village-Kandilli (Nordic Combined) Bus: 44+1 Capacity MD: 26+1 Capacity
 Bus38, Bus39, Bus40, Bus41 and Bus42 will provide transportation service between the Athletes' Village and Kandilli.

Nordic Combined		
Date/Time	01.02.2011	
	Athletes' Village	Venues
06.00		
06.30	MD11, MD12, MD13 (Athletes)	
07.00		
07.30		
08.00	Bus38	
08.30	Bus39	
09.00	Bus40	
09.30	Bus41	Bus38
10.00	Bus42	Bus39
10.30	Bus38	Bus40
11.00	Bus39	Bus41
11.30	Bus40	Bus42
12.00	Bus41	Bus38
12.30	Bus42	Bus39
13.00	Bus38	Bus40
13.30	Bus39	Bus41
14.00	Bus40	Bus42
14.30	Bus41	Bus38
15.00	Bus42	Bus39
15.30		Bus40
16.00		MD11, MD12, MD13 (Athletes), Bus41
16.30		Bus42

Line B: Athletes' Village-Kandilli (Nordic Combined) Bus: 44+1 Capacity MD: 26+1 Capacity
 Bus38, Bus39, Bus40, Bus41 and Bus42 will provide ring services between the Athletes' Village and Kandilli.

Curling						
Date/Time	26.01.2011		27.01.2011		28.01.2011	
	Athletes' Village	Venue	Athletes' Village	Venue	Athletes' Village	Venue
06.00						
06.30						
07.00					M1, M2, M3, M4, M5 (Team)	
07.30	M1, M2, M3 (Team)		M1, M2, M3 (Team)			
08.00						
08.30	MD1		MD1		MD1	
09.00	M4, M5, M6 (Team), MD2	MD1	M4, M5, M6 (Team), MD2	MD1	MD2	MD1
09.30	MD1	MD2	MD1	MD2	MD1	MD2
10.00	MD2	MD1	MD2	MD1	MD2	MD1
10.30	MD1	M1, M2, M3 (Team), MD2	MD1	M1, M2, M3 (Team), MD2	MD1	MD2
11.00	M7, M8, M9 (Team), MD2	MD1	M7, M8, M9 (Team), MD2	MD1	MD2	MD1
11.30	MD1	MD2	MD1	MD2	MD1	MD2
12.00	MD2	M4, M5, M6 (Team), MD1	MD2	M4, M5, M6 (Team), MD1	MD2	MD1
12.30	M1, M2, M3 (Team), MD1	MD2	M1, M2, M3 (Team), MD1	MD2	M1, M2, M3, M4, M5, M6, M7, M8, M9, M10 (Team), MD1	MD2
13.00	MD2	MD1	MD2	MD1	MD2	MD1
13.30	MD1	MD2	MD1	MD2	MD1	MD2
14.00	MD2	MD1	MD2	MD1	MD2	MD1
14.30	MD1	M7, M8, M9 (Team), MD2	MD1	M7, M8, M9 (Team), MD2	MD1	MD2
15.00	MD2	MD1	MD2	MD1	MD2	MD1
15.30	MD1	MD2	MD1	MD2	MD1	MD2
16.00	MD2	M1, M2, M3 (Team), MD1	MD2	M1, M2, M3 (Team), MD1	MD2	MD1
16.30	MD1	MD2	MD1	MD2	MD1	MD2
17.00		MD1		MD1	M1, M2, M3, M4, M5 (Team), MD2	MD1
17.30					MD1	MD2
18.00					MD2	MD1
18.30					MD1	MD2
19.00					MD2	MD1
19.30					MD1	MD2
20.00					MD2	MD1
20.30					MD1	MD2
21.00					MD2	MD1
21.30					MD1	MD2
22.00					MD2	MD1
22.30						MD2

Line C: Athletes' Village–Mecidiye (Curling)

M: 17+1 Capacity

MD: 26+1 Capacity

MD: Midibus MD1 and MD2 will provide transportation services between the Athletes' Village and Mecidiye.

Curling						
Date/Time	01.02.2011		02.02.2011		03.02.2011	
	Athletes' Village	Venue	Athletes' Village	Venue	Athletes' Village	Venue
06.00						
06.30						
07.00	M6, M7, M8, M9, M10 (Team)		M1, M2, M3, M4, M5 (Team)		M6, M7, M8, M9, M10 (Team)	
07.30						
08.00						
08.30	MD1		MD1		MD1	
09.00	MD2	MD1	MD2	MD1	MD2	MD1
09.30	MD1	MD2	MD1	MD2	MD1	MD2
10.00	MD2	MD1	MD2	MD1	MD2	MD1
10.30	MD1	MD2	MD1	MD2	MD1	MD2
11.00	MD2	MD1	MD2	MD1	MD2	MD1
11.30	MD1	MD2	MD1	MD2	MD1	MD2
12.00	MD2	MD1	MD2	MD1	MD2	MD1
12.30	M1, M2, M3, M4, M5 (Team), MD1	MD2	M6, M7, M8, M9, M10 (Team), MD1	MD2	M1, M2, M3, M4, M5 (Team), MD1	MD2
13.00	MD2	MD1	MD2	MD1	MD2	MD1
13.30	MD1	MD2	MD1	MD2	MD1	MD2
14.00	MD2	MD1	MD2	MD1	MD2	MD1
14.30	MD1	MD2	MD1	MD2	MD1	MD2
15.00	MD2	MD1	MD2	MD1	MD2	MD1
15.30	MD1	MD2	MD1	MD2	MD1	MD2
16.00	MD2	MD1	MD2	MD1	MD2	MD1
16.30	MD1	MD2	MD1	MD2	MD1	MD2
17.00	M6, M7, M8, M9, M10 (Team), MD2	MD1	M1, M2, M3, M4, M5 (Team), MD2	MD1	M6, M7, M8, M9, M10 (Team), MD2	MD1
17.30	MD1	MD2	MD1	MD2	MD1	MD2
18.00	MD2	MD1	MD2	MD1	MD2	MD1
18.30	MD1	MD2	MD1	MD2	MD1	MD2
19.00	MD2	MD1	MD2	MD1	MD2	MD1
19.30	MD1	MD2	MD1	MD2	MD1	MD2
20.00	MD2	MD1	MD2	MD1	MD2	MD1
20.30	MD1	MD2	MD1	MD2	MD1	MD2
21.00	MD2	MD1	MD2	MD1	MD2	MD1
21.30	MD1	MD2	MD1	MD2	MD1	MD2
22.00	MD2	MD1	MD2	MD1	MD2	MD1
22.30		MD2		MD2		MD2

Line C: Athletes' Village–Mecidiye (Curling) M: 17+1 Capacity MD:26+1 Capacity
 MD: Midibus MD1 and MD2 will provide transportation services between the Athletes' Village and Mecidiye.

Curling			
04.02.2011		05.02.2011	
Athletes' Village	Venue	Athletes' Village	Venue
M1, M2, M3, M4, M5 (Team)		M6, M7, M8, M9, M10 (Team)	
MD1		MD1	
MD2	MD1	MD2	MD1
MD1	MD2	MD1	MD2
MD2	MD1	MD2	MD1
MD1	MD2	MD1	MD2
MD2	MD1	MD2	MD1
MD1	MD2	MD1	MD2
MD2	MD1	MD2	MD1
M6, M7, M8, M9, M10 (Team), MD1	MD2	M1, M2, M3, M4, M5 (Team), MD1	MD2
MD2	MD1	MD2	MD1
MD1	MD2	MD1	MD2
MD2	MD1	MD2	MD1
MD1	MD2	MD1	MD2
MD2	MD1	MD2	MD1
MD1	MD2	MD1	MD2
MD2	MD1	MD2	MD1
MD1	MD2	MD1	MD2
M1, M2, M3, M4, M5 (Team), MD2	MD1	M6, M7, M8, M9, M10 (Team), MD2	MD1
MD1	MD2	MD1	MD2
MD2	MD1	MD2	MD1
MD1	MD2	MD1	MD2
MD2	MD1	MD2	MD1
MD1	MD2	MD1	MD2
MD2	MD1	MD2	MD1
MD1	MD2	MD1	MD2
MD2	MD1	MD2	MD1
MD1	MD2	MD1	MD2
MD2	MD1	MD2	MD1
MD1	MD2	MD1	MD2
MD2	MD1	MD2	MD1
	MD2		MD2

Figure Skating						
Date/Time	26.01.2011		27.01.2011		28.01.2011	
	Athletes' Village	Venues	Athletes' Village	Venues	Athletes' Village	Venues
05.30						
06.00						
06.30						
07.00						
07.30						
08.00	Bus23		Bus23		Bus23	
08.30	Bus24	Bus23	Bus24	Bus23	Bus24	Bus23
09.00	Bus23	Bus24	Bus23	Bus24	Bus23	Bus24
09.30	Bus24	Bus23	Bus24	Bus23	Bus24	Bus23
10.00	Bus23	Bus24	Bus23	Bus24	Bus23	Bus24
10.30	Bus24	Bus23	Bus24	Bus23	Bus24	Bus23
11.00	Bus23	Bus24	Bus23	Bus24	Bus23	Bus24
11.30	Bus24	Bus23	Bus24	Bus23	Bus24	Bus23
12.00	Bus23	Bus24	Bus23	Bus24	Bus23	Bus24
12.30	Bus24	Bus23	Bus24	Bus23	Bus24	Bus23
13.00	Bus23	Bus24	Bus23	Bus24	Bus23	Bus24
13.30	Bus24	Bus23	Bus24	Bus23	Bus24	Bus23
14.00	Bus23	Bus24	Bus23	Bus24	Bus23	Bus24
14.30	Bus24	Bus23	Bus24	Bus23	Bus24	Bus23
15.00	Bus23	Bus24	Bus23	Bus24	Bus23	Bus24
15.30	Bus24	Bus23	Bus24	Bus23	Bus24	Bus23
16.00	Bus23	Bus24	Bus23	Bus24	Bus23	Bus24
16.30	Bus24	Bus23	Bus24	Bus23	Bus24	Bus23
17.00	Bus23	Bus24	Bus23	Bus24	Bus23	Bus24
17.30	Bus24	Bus23	Bus24	Bus23	Bus24	Bus23
18.00	Bus23	Bus24	Bus23	Bus24	Bus23	Bus24
18.30	Bus24	Bus23	Bus24	Bus23	Bus24	Bus23
19.00	Bus23	Bus24	Bus23	Bus24	Bus23	Bus24
19.30	Bus24	Bus23	Bus24	Bus23	Bus24	Bus23
20.00	Bus23	Bus24	Bus23	Bus24	Bus23	Bus24
20.30		Bus23		Bus23		Bus23
21.00						
21.30						
22.00						
22.30						
23.00						

Line D: Athletes' Village-Yenişehir (Figure Skating)

Bus: 44+1 Capacity

Bus23 and Bus24 will provide transportation service between the Athletes' Village and Yenişehir.

Figure Skating				
Date/Time	01.02.2011		02.02.2011	
	Athletes' Village	Venues	Athletes' Village	Venues
05.30	Bus 21, Bus22 (Team)			
06.00				
06.30	Bus25, Bus26 (Team), Bus23			
07.00	Bus24	Bus23	Bus21, Bus22, Bus25, Bus26 (Team)	
07.30	Bus23	Bus24		
08.00	Bus21, Bus22, Bus25, Bus26 (Team), Bus24	Bus23		
08.30	Bus23	Bus24	Bus23	
09.00	Bus24	Bus23	Bus24	Bus23
09.30	Bus23	Bus24	Bus23	Bus24
10.00	Bus24	Bus23	Bus24	Bus23
10.30	Bus23	Bus24	Bus23	Bus24
11.00	Bus24	Bus23	Bus24	Bus23
11.30	Bus23	Bus24	Bus23	Bus24
12.00	Bus21, Bus22, Bus25, Bus26 (Team), Bus24	Bus23	Bus24	Bus23
12.30	Bus23	Bus24	Bus21, Bus22, Bus25, Bus26 (Team), Bus23	Bus24
13.00	Bus24	Bus23	Bus24	Bus23
13.30	Bus23	Bus24	Bus23	Bus24
14.00	Bus24	Bus23	Bus24	Bus23
14.30	Bus23	Bus24	Bus23	Bus24
15.00	Bus21, Bus22, Bus25, Bus26 (Team), Bus24	Bus23	Bus24	Bus23
15.30	Bus23	Bus24	Bus23	Bus24
16.00	Bus24	Bus23	Bus24	Bus23
16.30	Bus23	Bus24	Bus23	Bus24
17.00	Bus24	Bus23	Bus24	Bus23
17.30	Bus23	Bus24	Bus23	Bus24
18.00	Bus24	Bus23	Bus24	Bus23
18.30	Bus23	Bus24	Bus23	Bus24
19.00	Bus24	Bus23	Bus21, Bus22 (Team) Bus24	Bus23
19.30	Bus21, Bus22, Bus25, Bus26 (Team), Bus23	Bus24	Bus23	Bus24
20.00	Bus24	Bus23	Bus25, Bus26 (Team) Bus24	Bus23
20.30	Bus23	Bus24	Bus23	Bus24
21.00	Bus24	Bus23	Bus24	Bus23
21.30	Bus23	Bus24	Bus23	Bus24
22.00	Bus24	Bus23	Bus24	Bus23
22.30	Bus23	Bus24	Bus23	Bus24
23.00	Bus24	Bus23	Bus24	Bus23
23.30	Bus23	Bus24	Bus23	Bus24
00.00		Bus23		Bus23

Line D: Athletes' Village-Yenişehir (Figure Skating)

Bus: 44+1 Capacity

Bus23 and Bus24 will provide transportation service between the Athletes' Village and Yenişehir.

Figure Skating					
03.02.2011		04.02.2011		05.02.2011	
Athletes' Village	Venues	Athletes' Village	Venues	Athletes' Village	Venues
Bus21, Bus22, Bus25 (Team)				Bus21, Bus22, (Team), Bus23	
Bus23		Bus21, Bus22, Bus25, Bus26 (Team)		Bus24	Bus23
Bus24	Bus23	Bus24	Bus23	Bus23	Bus24
Bus23	Bus24	Bus23	Bus24	Bus24	Bus23
Bus21, Bus22, Bus25, Bus26, (Team), Bus24	Bus23	Bus24	Bus23	Bus21, Bus22, Bus25, Bus26 (Team), Bus23	Bus24
Bus23	Bus24	Bus23	Bus24	Bus24	Bus23
Bus24	Bus23	Bus24	Bus23	Bus23	Bus24
Bus23	Bus24	Bus23	Bus24	Bus24	Bus23
Bus24	Bus23	Bus24	Bus23	Bus23	Bus24
Bus21, Bus22, Bus25, Bus26 (Team), Bus23	Bus24	Bus21, Bus22, Bus25, Bus26 (Team), Bus23	Bus24	Bus24	Bus23
Bus24	Bus23	Bus24	Bus23	Bus23	Bus24
Bus25 (Team), Bus23	Bus24	Bus23	Bus24	Bus24	Bus23
Bus21, Bus22, Bus25, Bus26 (Team), Bus24	Bus23	Bus24	Bus23	Bus23	Bus24
Bus23	Bus24	Bus21, Bus22, Bus25, Bus26 (Team), Bus23	Bus24	Bus24	Bus23
Bus24	Bus23	Bus24	Bus23	Bus21, Bus22, Bus25, Bus26 (Team), Bus23	Bus24
Bus23	Bus24	Bus23	Bus24	Bus24	Bus23
Bus24	Bus23	Bus24	Bus23	Bus23	Bus24
Bus23	Bus24	Bus23	Bus24	Bus24	Bus23
Bus24	Bus23	Bus24	Bus23	Bus23	Bus24
Bus23	Bus24	Bus23	Bus24	Bus24	Bus23
Bus24	Bus23	Bus24	Bus23	Bus23	Bus24
Bus23	Bus24	Bus23	Bus24	Bus24	Bus23
Bus24	Bus23	Bus24	Bus23	Bus23	Bus24
Bus21, Bus22, Bus25 (Team), Bus23	Bus24	Bus23	Bus24	Bus24	Bus23
Bus24	Bus23	Bus24	Bus23	Bus23	Bus24
Bus23	Bus24	Bus23	Bus24	Bus24	Bus23
Bus24	Bus23	Bus21, Bus22 (Team), Bus24	Bus23	Bus21, Bus22, Bus25, Bus26 (Team), Bus23	Bus24
Bus23	Bus24	Bus23	Bus24	Bus24	Bus23
Bus24	Bus23	Bus25, Bus26 (Team), Bus24	Bus23	Bus23	Bus24
Bus25, Bus26 (Team), Bus23	Bus24	Bus23	Bus24	Bus24	Bus23
Bus24	Bus23	Bus24	Bus23	Bus23	Bus24
Bus23	Bus24	Bus23	Bus24	Bus24	Bus23
Bus24	Bus23	Bus24	Bus23	Bus23	Bus24
Bus23	Bus24	Bus23	Bus24	Bus24	Bus23
Bus24	Bus23	Bus24	Bus23	Bus23	Bus24
Bus23	Bus24	Bus23	Bus24	Bus24	Bus23
Bus24	Bus23	Bus24	Bus23	Bus23	Bus24
Bus23	Bus24	Bus24	Bus23	Bus24	Bus23
Bus24	Bus23	Bus23	Bus24	Bus24	Bus23
Bus23	Bus24	Bus24	Bus23	Bus23	Bus24
Bus24	Bus23	Bus23	Bus24	Bus24	Bus23
Bus23	Bus24	Bus24	Bus23	Bus23	Bus24
Bus24	Bus23	Bus23	Bus24	Bus24	Bus23
Bus23	Bus24	Bus24	Bus23	Bus23	Bus24
Bus24	Bus23	Bus23	Bus24	Bus24	Bus23

Freestyle Skiing				
Date/ Time	26.01.2011		27.01.2011	
	Athletes' Village	Venues	Athletes' Village	Venues
06.00	Bus49		Bus49	
06.30	Bus50	Bus49	Bus50	Bus49
07.00	Bus51	Bus50	Bus51	Bus50
07.30	MD21, MD22, MD23, MD24, MD25 (Athletes), Bus49	Bus51	MD21, MD22, MD23, MD24, MD25 (Athletes), Bus49	Bus51
08.00	Bus50	Bus49	Bus50	Bus49
08.30	Bus51	Bus50	Bus51	Bus50
09.00	Bus49	Bus51	Bus49	Bus51
09.30	Bus50	Bus49	Bus50	Bus49
10.00	Bus51	Bus50	Bus51	Bus50
10.30	Bus49	Bus51	Bus49	Bus51
11.00	Bus50	Bus49	Bus50	Bus49
11.30	Bus51	Bus50	Bus51	Bus50
12.00	Bus49	Bus51	Bus49	Bus51
12.30	Bus50	Bus49	Bus50	Bus49
13.00	Bus51	Bus50	Bus51	Bus50
13.30	Bus49	MD21, MD22, MD23, MD24, MD25 (Athletes), Bus51	Bus49	MD21, MD22, MD23, MD24, MD25 (Athletes), Bus51
14.00	Bus50	Bus49	Bus50	Bus49
14.30	Bus51	Bus50	Bus51	Bus50
15.00	Bus49	Bus51	Bus49	Bus51
15.30	Bus50	Bus49	MD21, MD22, MD23, MD24, MD25 (Athletes), Bus50	Bus49
16.00	Bus51	Bus50	Bus51	Bus50
16.30	Bus49	Bus51	Bus49	Bus51
17.00	Bus50	Bus49	Bus50	Bus49
17.30	Bus51	Bus50	Bus51	Bus50
18.00	Bus49	Bus51	Bus49	Bus51
18.30	Bus50	Bus49	Bus50	Bus49
19.00	Bus51	Bus50	Bus51	MD21, MD22, MD23, MD24, MD25 (Athletes), Bus50
19.30	Bus49	Bus51	Bus49	Bus51
20.00	Bus50	Bus49	Bus50	Bus49
20.30	Bus51	Bus50	Bus51	Bus50
21.00	Bus49	Bus51	Bus49	Bus51
21.30	Bus50	Bus49	Bus50	Bus49
22.00	Bus51	Bus50	Bus51	Bus50
22.30	Bus49	Bus51	Bus49	Bus51
23.00	Bus50	Bus49	Bus50	Bus49
23.30	Bus51	Bus50	Bus51	Bus50
00.00	Bus49	Bus51	Bus49	Bus51
00.30		Bus49		Bus49

Line E: Athletes' Village-Paländöken (Freestyle Skiing) Bus: 44+1 Capacity
MD: 26+1 Capacity
Bus49, Bus50 and Bus51 will provide transportation service between the Athletes' Village and Paländöken.

Freestyle Skiing							
28.01.2011		29.01.2011		30.01.2011		31.01.2011	
Athletes' Village	Venues	Athletes' Village	Venues	Athletes' Village	Venues	Athletes' Village	Venues
Bus49		Bus49		Bus49		Bus49	
Bus50	Bus49	Bus50	Bus49	Bus50	Bus49	Bus50	Bus49
Bus51	Bus50	Bus51	Bus50	Bus51	Bus50	Bus51	Bus50
MD21, MD22, MD23, MD24, MD25 (Athletes), Bus49	Bus51	Bus49	Bus51	Bus49	Bus51	Bus49	Bus51
Bus50	Bus49	Bus50	Bus49	Bus50	Bus49	Bus50	Bus49
Bus51	Bus50	Bus51	Bus50	Bus51	Bus50	Bus51	Bus50
Bus49	Bus51	Bus49	Bus51	Bus49	Bus51	Bus49	Bus51
Bus50	Bus49	Bus50	Bus49	Bus50	Bus49	Bus50	Bus49
Bus51	Bus50	Bus51	Bus50	Bus51	Bus50	Bus51	Bus50
Bus49	Bus51	Bus49	Bus51	Bus49	Bus51	Bus49	Bus51
Bus50	Bus49	Bus50	Bus49	Bus50	Bus49	Bus50	Bus49
Bus51	Bus50	Bus51	Bus50	Bus51	Bus50	Bus51	Bus50
Bus49	Bus51	Bus49	Bus51	Bus49	Bus51	Bus49	Bus51
Bus50	Bus49	Bus50	Bus49	Bus50	Bus49	Bus50	Bus49
Bus51	Bus50	Bus51	Bus50	Bus51	Bus50	Bus51	Bus50
Bus49	Bus51	Bus49	Bus51	Bus49	Bus51	Bus49	Bus51
Bus50	MD21, MD22, MD23, MD24, MD25 (Athletes), Bus49	Bus50	Bus49	Bus50	Bus49	Bus50	Bus49
Bus51	Bus50	Bus51	Bus50	Bus51	Bus50	Bus51	Bus50
Bus49	Bus51	Bus49	Bus51	Bus49	Bus51	Bus49	Bus51
Bus50	Bus49	Bus50	Bus49	Bus50	Bus49	Bus50	Bus49
Bus51	Bus50	Bus51	Bus50	Bus51	Bus50	Bus51	Bus50
Bus49	Bus51	Bus49	Bus51	Bus49	Bus51	Bus49	Bus51
Bus50	Bus49	Bus50	Bus49	Bus50	Bus49	Bus50	Bus49
Bus51	Bus50	Bus51	Bus50	Bus51	Bus50	Bus51	Bus50
Bus49	Bus51	Bus49	Bus51	Bus49	Bus51	Bus49	Bus51
Bus50	Bus49	Bus50	Bus49	Bus50	Bus49	Bus50	Bus49
Bus51	Bus50	Bus51	Bus50	Bus51	Bus50	Bus51	Bus50
Bus49	Bus51	Bus49	Bus51	Bus49	Bus51	Bus49	Bus51
Bus50	Bus49	Bus50	Bus49	Bus50	Bus49	Bus50	Bus49
Bus51	Bus50	Bus51	Bus50	Bus51	Bus50	Bus51	Bus50
Bus49	Bus51	Bus49	Bus51	Bus49	Bus51	Bus49	Bus51
	Bus49		Bus49		Bus49		Bus49

Freestyle Skiing				
Date/ Time	01.02.2011		02.02.2011	
	Athletes' Village	Venues	Athletes' Village	Venues
06.00	Bus49		Bus49	
06.30	Bus50	Bus49	Bus50	Bus49
07.00	Bus51	Bus50	MD21, MD22, MD23, MD24, MD25 (Athletes), Bus51	Bus50
07.30	Bus49	Bus51	Bus49	Bus51
08.00	Bus50	Bus49	Bus50	Bus49
08.30	Bus51	Bus50	Bus51	Bus50
09.00	Bus49	Bus51	Bus49	Bus51
09.30	Bus50	Bus49	Bus50	Bus49
10.00	Bus51	Bus50	Bus51	Bus50
10.30	Bus49	Bus51	Bus49	Bus51
11.00	Bus50	Bus49	Bus50	Bus49
11.30	Bus51	Bus50	Bus51	Bus50
12.00	Bus49	Bus51	Bus49	Bus51
12.30	Bus50	Bus49	Bus50	MD21, M22, MD23, MD24, MD25 (Athletes)
13.00	Bus51	Bus50	Bus51	Bus49
13.30	Bus49	Bus51	Bus49	Bus50
14.00	Bus50	Bus49	Bus50	Bus51
14.30	Bus51	Bus50	Bus51	Bus49
15.00	MD21, MD22, MD23, MD24, MD25 (Athletes), Bus49	Bus51	Bus49	Bus50
15.30	Bus50	Bus49	Bus50	Bus51
16.00	Bus51	Bus50	Bus51	Bus49
16.30	Bus49	Bus51	Bus49	Bus50
17.00	Bus50	Bus49	Bus50	Bus51
17.30	Bus51	Bus50	Bus51	Bus49
18.00	Bus49	Bus51	Bus49	Bus50
18.30	Bus50	Bus49	Bus50	Bus51
19.00	Bus51	MD21, MD22, MD23, MD24, MD25 (Athletes)	Bus51	Bus49
19.30	Bus49	Bus50	Bus49	Bus50
20.00	Bus50	Bus51	Bus50	Bus51
20.30	Bus51	Bus49	Bus51	Bus49
21.00	Bus49	Bus50	Bus49	Bus50
21.30	Bus50	Bus51	Bus50	Bus51
22.00	Bus51	Bus49	Bus51	Bus49
22.30	Bus49	Bus50	Bus49	Bus50
23.00	Bus50	Bus51	Bus50	Bus51
23.30	Bus51	Bus49	Bus51	Bus49
00.00	Bus49	Bus50	Bus49	Bus50
00.30		Bus51		Bus51

Line E: Athletes' Village-Paländöken (Freestyle Skiing)

Bus: 44+1 Capacity MD: 26+1 Capacity

Bus49, Bus50 and Bus51 will provide transportation service between the Athletes' Village and Paländöken.

Freestyle Skiing					
03.02.2011		04.02.2011		05.02.2011	
Athletes' Village	Venues	Athletes' Village	Venues	Athletes' Village	Venues
Bus49		Bus49		Bus49	
Bus50	Bus49	Bus50	Bus49	Bus50	Bus49
MD21, MD22, MD23, MD24, MD25 (Athletes), Bus51	Bus50	MD21, MD22, MD23, MD24, MD25 (Athletes), Bus51	Bus50	MD21, MD22, MD23, MD24, MD25 (Athletes), Bus51	Bus50
Bus49	Bus51	Bus49	Bus51	Bus49	Bus51
Bus50	Bus49	Bus50	Bus49	Bus50	Bus49
Bus51	Bus50	Bus51	Bus50	Bus51	Bus50
Bus49	Bus51	Bus49	Bus51	Bus49	Bus51
Bus50	Bus49	Bus50	Bus49	Bus50	Bus49
Bus51	Bus50	Bus51	Bus50	Bus51	Bus50
Bus49	Bus51	Bus49	Bus51	Bus49	Bus51
Bus50	Bus49	Bus50	Bus49	Bus50	Bus49
Bus51	Bus50	Bus51	Bus50	Bus51	Bus50
Bus49	Bus51	Bus49	Bus51	Bus49	Bus51
Bus50	MD21, MD22, MD23, MD24, MD25 (Athletes)	Bus50	Bus49	Bus50	Bus49
Bus51	Bus49	Bus51	Bus50	Bus51	Bus50
Bus49	Bus50	Bus49	MD21, MD22, MD23, MD24, MD25 (Athletes)	Bus49	Bus51
Bus50	Bus51	Bus50	Bus51	Bus50	Bus49
Bus51	Bus49	Bus51	Bus49	Bus51	Bus50
MD21, MD22, MD23, MD24, MD25 (Athletes), Bus49	Bus50	Bus49	Bus50	Bus49	Bus51
Bus50	Bus51	Bus50	Bus51	Bus50	Bus49
Bus51	Bus49	Bus51	Bus49	Bus51	MD21, MD22, MD23, MD24, MD25 (Athletes)
Bus49	Bus50	Bus49	Bus50	Bus49	Bus50
Bus50	Bus51	MD21, MD22, MD23, MD24, MD25 (Athletes)	Bus51	Bus50	Bus51
Bus51	Bus49	Bus50	Bus49	Bus51	Bus49
Bus49	Bus50	Bus51	Bus50	Bus49	Bus50
Bus50	Bus51	Bus49	Bus51	Bus50	Bus51
Bus51	MD21, MD22, MD23, MD24, MD25 (Athletes), Bus49	Bus50	MD21, MD22, MD23, MD24, MD25 (Athletes)	Bus51	Bus49
Bus49	Bus50	Bus51	Bus49	Bus49	Bus50
Bus50	Bus51	Bus49	Bus50	Bus50	Bus51
Bus51	Bus49	Bus50	Bus51	Bus51	Bus49
Bus49	Bus50	Bus51	Bus49	Bus49	Bus50
Bus50	Bus51	Bus49	Bus50	Bus50	Bus51
Bus51	Bus49	Bus50	Bus51	Bus51	Bus49
Bus49	Bus50	Bus51	Bus49	Bus49	Bus50
Bus50	Bus51	Bus49	Bus50	Bus50	Bus51
Bus51	Bus49	Bus50	Bus51	Bus51	Bus49
Bus49	Bus50	Bus51	Bus49	Bus49	Bus50
	Bus51		Bus50		Bus51

Short Track				
Date/Time	27.01.2011		28.01.2011	
	Athletes' Village	Venues	Athletes' Village	Venues
06.00				
06.30				
07.00	MD4, MD5, MD6, MD7, D8, MD9, MD10 (Athletes)		MD4, MD5, MD6, MD7, MD8, MD9, MD10 (Athletes)	
07.30	Bus23		Bus23	
08.00	Bus24	Bus23	Bus24	Bus23
08.30	Bus23	Bus24	Bus23	Bus24
09.00	Bus24	Bus23	Bus24	Bus23
09.30	Bus23	Bus24	Bus23	Bus24
10.00	Bus24	Bus23	Bus24	Bus23
10.30	Bus23	Bus24	Bus23	Bus24
11.00	Bus24	Bus23	Bus24	Bus23
11.30	Bus23	Bus24	Bus23	Bus24
12.00	Bus24	Bus23	Bus24	Bus23
12.30	Bus23	Bus24	Bus23	Bus24
13.00	Bus24	Bus23	Bus24	Bus23
13.30	Bus23	Bus24	Bus23	Bus24
14.00	Bus24	Bus23	Bus24	Bus23
14.30	Bus23	Bus24	Bus23	Bus24
15.00	Bus24	Bus23	Bus24	Bus23
15.30	Bus23	Bus24	Bus23	Bus24
16.00	Bus24	Bus23	Bus24	Bus23
16.30	Bus23	Bus24	Bus23	Bus24
17.00	Bus24	Bus23	Bus24	MD4, MD5, MD6, MD7, MD8, MD9, MD10 (Athletes), Bus23
17.30	Bus23	Bus24	Bus23	Bus24
18.00	Bus24	Bus23	Bus24	Bus23
18.30	Bus23	Bus24	Bus23	Bus24
19.00	Bus24	Bus23	Bus24	Bus23
19.30	Bus23	MD4, MD5, MD6, MD7, MD8, MD9, MD10 (Athletes), Bus24	Bus23	Bus24
20.00		Bus23		Bus23

Competitions will end on January 30th, 2011.

Line D: Athletes' Village-Yenişehir (Short Track)

Bus: 44+1 Capacity MD: 26+1 Capacity

Bus23 and Bus24 will provide transportation service between the Athletes' Village and Yenişehir.

Short Track					
29.01.2011		30.01.2011		31.01.2011	
Athletes' Village	Venues	Athletes' Village	Venues	Athletes' Village	Venues
Bus23				Bus23	
Bus24	Bus23	Bus24		Bus24	Bus23
Bus23	Bus24	Bus23	Bus24	Bus23	Bus24
Bus24	Bus23	Bus24	Bus23	Bus24	Bus23
Bus23	Bus24	Bus23	Bus24	Bus23	Bus24
Bus24	Bus23	Bus24	Bus23	Bus24	Bus23
Bus23	Bus24	Bus23	Bus24	Bus23	Bus24
Bus24	Bus23	Bus24	Bus23	Bus24	Bus23
Bus23	Bus24	Bus23	Bus24	Bus23	Bus24
MD4, MD5, MD6, MD7, MD8, MD9, MD10 (Athletes), Bus24	Bus23	MD4, MD5, MD6, MD7, MD8, MD9, MD10 (Athletes), Bus24	Bus23	MD4, MD5, MD6, MD7, MD8, MD9, MD10 (Athletes), Bus24	Bus23
Bus23	Bus24	Bus23	Bus24	Bus23	Bus24
Bus24	Bus23	Bus24	Bus23	Bus24	Bus23
Bus23	Bus24	Bus23	Bus24	Bus23	Bus24
Bus24	Bus23	Bus24	Bus23	Bus24	Bus23
Bus23	Bus24	Bus23	Bus24	Bus23	Bus24
Bus24	Bus23	Bus24	Bus23	Bus24	Bus23
Bus23	Bus24	Bus23	Bus24	Bus23	Bus24
Bus24	Bus23	Bus24	Bus23	Bus24	Bus23
Bus23	Bus24	Bus23	Bus24	Bus23	Bus24
Bus24	Bus23	Bus24	Bus23	Bus24	Bus23
Bus23	Bus24	Bus23	Bus24	Bus23	Bus24
Bus24	Bus23	Bus24	Bus23	Bus24	Bus23
Bus23	Bus24	Bus23	Bus24	Bus23	Bus24
Bus24	MD4, MD5, MD6, MD7, MD8, MD9, MD10 (Athletes), Bus23	Bus24	MD4, MD5, MD6, MD7, MD8, MD9, MD10 (Athletes), Bus23	Bus24	MD4, MD5, MD6, MD7, MD8, MD9, MD10 (Athletes), Bus23
Bus23	Bus24		Bus24		Bus24
	Bus23				

Date/Time	Ski Jumping			Ski Jumping			Athletes' Village	Venues	31.01.2011
	27.01.2011	28.01.2011	29.01.2011	30.01.2011	31.01.2011				
08.00	Athletes' Village	Athletes' Village	Athletes' Village	Athletes' Village	Athletes' Village	Athletes' Village	Athletes' Village	Athletes' Village	Athletes' Village
09.00	MD26 (Team)					MD27, MD28 (Team)	Bus58		Bus58
09.30	Bus58	MD26 (Team)					Bus59	Bus58	Bus58
10.00	Bus59	Bus58					Bus58	Bus59	Bus58
10.30	MD27, MD28 (Team), Bus58	Bus59	Bus58				Bus59	Bus58	Bus58
11.00	Bus59	Bus58	Bus59				Bus58	Bus59	Bus58
11.30	Bus58	Bus59	Bus58				Bus59	Bus58	Bus58
12.00	Bus59	MD26 (Team)	Bus58				Bus58	MD27, MD28 (Team) Bus59	Bus58
12.30	Bus58	Bus59	MD26 (Team)	Bus58			Bus59	Bus58	Bus58
13.00	Bus59	Bus58	Bus59				Bus58	Bus59	Bus58
13.30	Bus58	Bus59	Bus58				Bus59	Bus58	Bus58
14.00	Bus59	Bus58	Bus59				Bus58	Bus59	Bus58
14.30	Bus58	Bus59	Bus58				Bus59	Bus58	Bus58
15.00	Bus59	Bus58	Bus59				Bus58	Bus59	Bus58
15.30	Bus58	MD27, MD28 (Team), Bus59	Bus58	MD27, MD28 (Team)			Bus59	Bus58	MD27, MD28 (Team)
16.00		Bus58	Bus59	Bus58			Bus58	Bus59	Bus58
16.30		Bus59	Bus58	Bus59	Bus58		MD26 (Team), Bus59	Bus58	Bus58
17.00		Bus58	Bus59	Bus58	Bus59		Bus58	Bus59	Bus58
17.30		Bus59	Bus58	Bus59	Bus58		Bus59	Bus58	Bus58
18.00		Bus58	Bus59	Bus58	Bus59		Bus58	Bus59	Bus58
18.30		Bus59	Bus58	Bus59	Bus58		Bus59	Bus58	Bus58
19.00		Bus58	Bus59	Bus58	Bus59		Bus58	Bus59	Bus58
19.30		Bus59	Bus58	Bus59	Bus58		Bus59	Bus58	Bus58
20.00		Bus58	Bus59	Bus58	Bus59		Bus58	Bus59	Bus58
20.30		Bus59	MD27, MD28 (Team) Bus58	Bus59	MD27, MD28 (Team) Bus58		Bus58	MD26 (Team), Bus59	Bus58
21.00			Bus59	Bus59	Bus59			Bus58	MD27, MD28 (Team) Bus58

Line F: Athletes' Village-Kiremitliktepe (Ski Jumping) Bus: 44+1 Capacity MD: 26+1 Capacity Bus58 and Bus59 will provide transportation service between the Athletes' Village and Kiremitliktepe.

Ski Jumping						
Date/ Time	01.02.2011		02.02.2011		03.02.2011	
	Athletes' Village	Venues	Athletes' Village	Venues	Athletes' Village	Venues
15.30	MD27, MD28 (Team)		MD27, MD28 (Team)		MD27, MD28 (Team)	
16.00	Bus58		Bus58		Bus58	
16.30	Bus59	Bus58	Bus59	Bus58	Bus59	Bus58
17.00	Bus58	Bus59	Bus58	Bus59	Bus58	Bus59
17.30	Bus59	Bus58	Bus59	Bus58	Bus59	Bus58
18.00	Bus58	Bus59	Bus58	Bus59	Bus58	Bus59
18.30	Bus59	Bus58	Bus59	Bus58	Bus59	Bus58
19.00	Bus58	Bus59	Bus58	Bus59	Bus58	Bus59
19.30	Bus59	Bus58	Bus59	Bus58	Bus59	Bus58
20.00	Bus58	Bus59	Bus58	Bus59	Bus58	Bus59
20.30	Bus59	MD27, MD28 (Team) Bus58	Bus59	MD27, MD28 (Team) Bus58	Bus59	MD27, MD28 (Team) Bus58
21.00		Bus59		Bus59		Bus59

Line F: Athletes' Village-Kiremitliktepe (Ski Jumping) Bus: 44+1 Capacity MD: 26+1 Capacity Bus58 and Bus59 will provide transportation service between the Athletes' Village and Kiremitliktepe.

Snowboarding						
Date/Time	26.01.2011		27.01.2011		28.01.2011	
	Athletes' Village	Venues	Athletes' Village	Venues	Athletes' Village	Venues
06.00	Bus49				Bus49	
06.30	Bus50	Bus49			Bus50	Bus49
07.00	Bus51	Bus50			Bus51	Bus50
07.30	Bus49	Bus51			Bus49	Bus51
08.00	Bus43, Bus44, Bus45, Bus46, Bus47, Bus48 (Athletes), Bus50	Bus49			Bus43, Bus44, Bus45, Bus46, Bus47, Bus48 (Athletes), Bus50	Bus49
08.30	Bus51	Bus50			Bus51	Bus50
09.00	Bus49	Bus51			Bus49	Bus51
09.30	Bus50	Bus49			Bus50	Bus49
10.00	Bus43, Bus44, Bus45, Bus46, Bus47, Bus48 (Athletes), Bus51	Bus50	Bus43, Bus44, Bus45, Bus46, Bus47, Bus48 (Athletes), Bus50		Bus51	Bus50
10.30	Bus49	Bus51	Bus49	Bus50	Bus49	Bus51
11.00	Bus50	Bus49	Bus50	Bus49	Bus50	Bus49
11.30	Bus51	Bus50	Bus51	Bus50	Bus51	Bus50
12.00	Bus49	Bus51	Bus49	Bus51	Bus49	Bus51
12.30	Bus50	Bus49	Bus50	Bus49	Bus50	Bus49
13.00	Bus51	Bus50	Bus51	Bus50	Bus51	Bus49
13.30	Bus49	Bus51	Bus49	Bus43, Bus44, Bus45, Bus46, Bus47, Bus48 (Athletes), Bus51	Bus49	Bus43, Bus44, Bus45, Bus46, Bus47, Bus48 (Athletes), Bus51
14.00	Bus50	Bus49	Bus50	Bus49	Bus50	Bus49
14.30	Bus51	Bus43, Bus44, Bus45, Bus46, Bus47, Bus48 (Athletes), Bus50	Bus51	Bus50	Bus51	Bus50
15.00	Bus49	Bus51	Bus49	Bus51	Bus49	Bus51
15.30	Bus50	Bus49	Bus50	Bus49	Bus50	Bus49
16.00	Bus51	Bus50	Bus51	Bus50	Bus51	Bus50
16.30	Bus49	Bus51	Bus49	Bus51	Bus49	Bus51
17.00	Bus50	Bus49	Bus50	Bus49	Bus50	Bus49
17.30	Bus51	Bus50	Bus51	Bus50	Bus51	Bus50
18.00	Bus49	Bus51	Bus49	Bus51	Bus49	Bus51
18.30	Bus50	Bus49	Bus50	Bus49	Bus50	Bus49
19.00	Bus51	Bus50	Bus51	Bus50	Bus51	Bus50
19.30	Bus49	Bus51	Bus49	Bus51	Bus49	Bus51
20.00	Bus50	Bus49	Bus50	Bus49	Bus50	Bus49
20.30	Bus51	Bus50	Bus51	Bus50	Bus51	Bus50
21.00	Bus49	Bus51	Bus49	Bus51	Bus49	Bus51
21.30	Bus50	Bus49	Bus50	Bus49	Bus50	Bus49
22.00	Bus51	Bus50	Bus51	Bus50	Bus51	Bus50
22.30	Bus49	Bus51	Bus49	Bus51	Bus49	Bus51
23.00	Bus50	Bus49	Bus50	Bus49	Bus50	Bus49
23.30	Bus51	Bus50	Bus51	Bus50	Bus51	Bus50
00.00	Bus49	Bus51	Bus49	Bus51	Bus49	Bus51
00.30		Bus49		Bus49		Bus49

Line E: Athletes' Village-Paländöken (Freestyle Skiing)

Bus: 44+1 Capacity

Bus49, Bus50 and Bus51 will provide transportation service between the Athletes' Village and Paländöken.

Snowboarding						
Date/Time	01.02.2011		02.02.2011		03.02.2011	
	Athletes' Village	Venues	Athletes' Village	Venues	Athletes' Village	Venues
06.00	Bus49		Bus49		Bus49	
06.30	Bus50	Bus49	Bus50	Bus49	Bus50	Bus49
07.00	Bus51	Bus50	Bus51	Bus50	Bus51	Bus50
07.30	Bus49	Bus51	Bus49	Bus51	Bus49	Bus51
08.00	Bus43, Bus44, Bus45, Bus46, Bus47, Bus48 (Athletes), Bus50	Bus49	Bus43, Bus44, Bus45, Bus46, Bus47, Bus48 (Athletes), Bus50	Bus49	Bus43, Bus44, Bus45, Bus46, Bus47, Bus48 (Athletes), Bus50	Bus49
08.30	Bus51	Bus50	Bus51	Bus50	Bus51	Bus50
09.00	Bus49	Bus51	Bus49	Bus51	Bus49	Bus51
09.30	Bus50	Bus49	Bus50	Bus49	Bus50	Bus49
10.00	Bus51	Bus50	Bus51	Bus50	Bus51	Bus50
10.30	Bus49	Bus51	Bus49	Bus51	Bus49	Bus51
11.00	Bus50	Bus49	Bus50	Bus49	Bus50	Bus49
11.30	Bus51	Bus50	Bus51	Bus50	Bus51	Bus50
12.00	Bus49	Bus51	Bus49	Bus51	Bus49	Bus51
12.30	Bus50	Bus49	Bus50	Bus49	Bus50	Bus49
13.00	Bus51	Bus50	Bus51	Bus50	Bus51	Bus50
13.30	Bus49	Bus51	Bus49	Bus43, Bus44, Bus45, Bus46, Bus47, Bus48 (Athletes), Bus51	Bus49	Bus51
14.00	Bus50	Bus49	Bus50	Bus49	Bus50	Bus49
14.30	Bus51	Bus50	Bus51	Bus50	Bus51	Bus50
15.00	Bus49	Bus51	Bus49	Bus51	Bus49	Bus51
15.30	Bus50	Bus43, Bus44, Bus45, Bus46, Bus47, Bus48 (Athletes), Bus49	Bus50	Bus49	Bus50	Bus49
16.00	Bus51	Bus50	Bus51	Bus50	Bus51	Bus43, Bus44, Bus45, Bus46, Bus47, Bus48 (Athletes), Bus50
16.30	Bus49	Bus51	Bus49	Bus51	Bus49	Bus51
17.00	Bus50	Bus49	Bus50	Bus49	Bus50	Bus49
17.30	Bus51	Bus50	Bus51	Bus50	Bus51	Bus50
18.00	Bus49	Bus51	Bus49	Bus51	Bus49	Bus51
18.30	Bus50	Bus49	Bus50	Bus49	Bus50	Bus49
19.00	Bus51	Bus50	Bus51	Bus50	Bus51	Bus50
19.30	Bus49	Bus51	Bus49	Bus51	Bus49	Bus51
20.00	Bus50	Bus49	Bus50	Bus49	Bus50	Bus49
20.30	Bus51	Bus50	Bus51	Bus50	Bus51	Bus50
21.00	Bus49	Bus51	Bus49	Bus51	Bus49	Bus51
21.30	Bus50	Bus49	Bus50	Bus49	Bus50	Bus49
22.00	Bus51	Bus50	Bus51	Bus50	Bus51	Bus50
22.30	Bus49	Bus51	Bus49	Bus51	Bus49	Bus51
23.00	Bus50	Bus49	Bus50	Bus49	Bus50	Bus49
23.30	Bus51	Bus50	Bus51	Bus50	Bus51	Bus50
00.00	Bus49	Bus51	Bus49	Bus51	Bus49	Bus51
00.30		Bus49		Bus49		Bus49

Line E: Athletes' Village-Paländöken (Freestyle Skiing) Bus: 44+1 Capacity
 Bus49, Bus50 and Bus51 will provide transportation service between the Athletes' Village and Paländöken.

Ice Hockey				
Date/Time	27.01.2011		28.01.2011	
	Athletes' Village	Venues	Athletes' Village	Venues
06.00				
06.30				
07.00	Bus1, Bus2, Bus3, Bus4 (Team)			
07.30				
08.00				
08.30	Bus5		Bus1, Bus2 (Team), Bus5	
09.00	Bus6	Bus5	Bus6	Bus5
09.30	Bus5	Bus6	Bus3, Bus4 (Team), Bus5	Bus6
10.00	Bus7, Bus8, Bus9, Bus10 (Team), Bus6	Bus5	Bus6	Bus5
10.30	Bus5	Bus6	Bus5	Bus6
11.00	Bus6	Bus5	Bus6	Bus5
11.30	Bus5	Bus6	Bus5	Bus6
12.00	Bus6	Bus5	Bus6	Bus5
12.30	Bus5	Bus1, Bus2, Bus3, Bus4 (Team) Bus6	Bus7, Bus8 (Team), Bus5	Bus6
13.00	Bus6	Bus5	Bus6	Bus5
13.30	Bus11, Bus12, Bus13, Bus14 (Team), Bus5	Bus6	Bus9, Bus10 (Team), Bus5	Bus6
14.00	Bus6	Bus5	Bus6	Bus1, Bus2 (Team), Bus5
14.30	Bus5	Bus6	Bus5	Bus6
15.00	Bus6	Bus5	Bus6	Bus5
15.30	Bus5	Bus7, Bus8, Bus9, Bus10 (Team), Bus6	Bus5	Bus6
16.00	Bus6	Bus5	Bus6	Bus5
16.30	Bus5	Bus6	Bus11, Bus12 (Team), Bus5	Bus6
17.00	Bus6	Bus5	Bus6	Bus3, Bus4 (Team), Bus5
17.30	Bus5	Bus6	Bus13, Bus14 (Team), Bus5	Bus6
18.00	Bus6	Bus5	Bus6	Bus7, Bus8 (Team), Bus5
18.30	Bus5	Bus6	Bus5	Bus6
19.00	Bus6	Bus11, Bus12, Bus13, Bus14 (Team), Bus5	Bus6	Bus9, Bus10 (Team), Bus5
19.30	Bus5	Bus6	Bus5	Bus6
20.00	Bus6	Bus5	Bus6	Bus5
20.30		Bus6	Bus5	Bus6
21.00			Bus6	Bus5
21.30			Bus5	Bus6
22.00			Bus6	Bus11, Bus12 (Team), Bus5
22.30			Bus5	Bus6
23.00				Bus13, Bus14 (Team), Bus5

Line G: Athletes' Village-Olympic Arena (Ice Hockey)

Bus: 44+1 Capacity

Bus5 and Bus 6 will provide transportation service between the Athletes' Village and Olympic Arena.

Ice Hockey					
29.01.2011		30.01.2011		31.01.2011	
Athletes' Village	Venues	Athletes' Village	Venues	Athletes' Village	Venues
Bus5		Bus1, Bus2 (Team), Bus5		Bus1, Bus2 (Team), Bus5	
Bus6	Bus5	Bus6	Bus5	Bus6	Bus5
Bus1, Bus2 (Team), Bus5	Bus6	Bus3, Bus4 (Team), Bus5	Bus6	Bus3, Bus4 (Team), Bus5	Bus6
Bus6	Bus5	Bus6	Bus5	Bus6	Bus5
Bus5	Bus6	Bus5	Bus6	Bus5	Bus6
Bus6	Bus5	Bus6	Bus5	Bus6	Bus5
Bus5	Bus6	Bus5	Bus6	Bus5	Bus6
Bus6	Bus5	Bus6	Bus5	Bus6	Bus5
Bus5	Bus6	Bus7, Bus8 (Team), Bus5	Bus6	Bus7, Bus8 (Team), Bus5	Bus6
Bus6	Bus5	Bus6	Bus5	Bus6	Bus5
Bus3, Bus4 (Team), Bus5	Bus6	Bus9, Bus10 (Team), Bus5	Bus6	Bus9, Bus10 (Team), Bus5	Bus6
Bus6	Bus5	Bus6	Bus1, Bus2 (Team), Bus5	Bus6	Bus1, Bus2 (Team), Bus5
Bus5	Bus6	Bus5	Bus6	Bus5	Bus6
Bus6	Bus1, Bus2 (Team), Bus5	Bus6	Bus3, Bus4 (Team), Bus5	Bus6	Bus3, Bus4 (Team), Bus5
Bus5	Bus6	Bus5	Bus6	Bus5	Bus6
Bus6	Bus5	Bus6	Bus5	Bus6	Bus5
Bus5	Bus6	Bus11, Bus12 (Team), Bus5	Bus6	Bus11, Bus12 (Team), Bus5	Bus6
Bus6	Bus5	Bus6	Bus5	Bus6	Bus5
Bus7, Bus8 (Team), Bus5	Bus6	Bus13, Bus14 (Team), Bus5	Bus6	Bus13, Bus14 (Team), Bus5	Bus6
Bus6	Bus5	Bus6	Bus7, Bus8 (Team), Bus5	Bus6	Bus7, Bus8 (Team), Bus5
Bus5	Bus6	Bus5	Bus6	Bus5	Bus6
Bus6	Bus3, Bus4 (Team), Bus5	Bus6	Bus9, Bus10 (Team), Bus5	Bus6	Bus9, Bus10 (Team), Bus5
Bus5	Bus6	Bus5	Bus6	Bus5	Bus6
Bus6	Bus5	Bus6	Bus5	Bus6	Bus5
Bus5	Bus6	Bus5	Bus6	Bus5	Bus6
Bus6	Bus5	Bus6	Bus5	Bus6	Bus5
Bus5	Bus6	Bus5	Bus6	Bus5	Bus6
Bus6	Bus5	Bus6	Bus11, Bus12 (Team), Bus5	Bus6	Bus11, Bus12 (Team), Bus5
Bus5	Bus6	Bus5	Bus6	Bus5	Bus6
	Bus7, Bus8 (Team), Bus5		Bus13, Bus14 (Team), Bus5		Bus13, Bus14 (Team), Bus5

Ice Hockey						
Date/Time	01.02.2011		02.02.2011		03.02.2011	
	Athletes' Village	Venues	Athletes' Village	Venues	Athletes' Village	Venues
07.00						
07.30						
08.00			Bus5			
08.30	Bus5		Bus6	Bus5	Bus1, Bus2 (Team), Bus5	
09.00	Bus6	Bus5	Bus5	Bus6	Bus6	Bus5
09.30	Bus1, Bus2 (Team), Bus5	Bus6	Bus6	Bus5	Bus3, Bus4 (Team), Bus5	Bus6
10.00	Bus6	Bus5	Bus1, Bus2 (Team), Bus5	Bus6	Bus6	Bus5
10.30	Bus5	Bus6	Bus6	Bus5	Bus5	Bus6
11.00	Bus6	Bus5	Bus5	Bus6	Bus6	Bus5
11.30	Bus5	Bus6	Bus6	Bus5	Bus5	Bus6
12.00	Bus6	Bus5	Bus5	Bus6	Bus6	Bus5
12.30	Bus5	Bus6	Bus6	Bus5	Bus7, Bus8, Bus9, Bus10, (Team), Bus5	Bus6
13.00	Bus6	Bus5	Bus5	Bus6	Bus6	Bus5
13.30	Bus3, Bus4 (Team), Bus5	Bus6	Bus3, Bus4 (Team), Bus6	Bus5	Bus5	Bus6
14.00	Bus6	Bus5	Bus5	Bus6	Bus6	Bus1, Bus2 (Team), Bus5
14.30	Bus5	Bus6	Bus6	Bus5	Bus5	Bus6
15.00	Bus6	Bus1, Bus2 (Team), Bus5	Bus5	Bus6	Bus6	Bus3, Bus4 (Team), Bus5
15.30	Bus5	Bus6	Bus6	Bus1, Bus2 (Team), Bus5	Bus5	Bus6
16.00	Bus6	Bus5	Bus5	Bus6	Bus6	Bus5
16.30	Bus5	Bus6	Bus6	Bus5	Bus11, Bus12, Bus13, Bus14 (Team), Bus5	Bus6
17.00	Bus6	Bus5	Bus5	Bus6	Bus6	Bus5
17.30	Bus7, Bus8 (Team), Bus5	Bus6	Bus7, Bus8 (Team) Bus6	Bus5	Bus5	Bus6
18.00	Bus6	Bus5	Bus5	Bus6	Bus6	Bus7, Bus8, Bus9, Bus10 (Team), Bus5
18.30	Bus5	Bus6	Bus6	Bus3, Bus4 (Team), Bus5	Bus5	Bus6
19.00	Bus6	Bus3, Bus4 (Team), Bus5	Bus5	Bus3, Bus4 (Team), Bus6	Bus6	Bus9, Bus10 (Team), Bus5
19.30	Bus5	Bus6	Bus6	Bus5	Bus5	Bus6
20.00	Bus6	Bus5	Bus5	Bus6	Bus6	Bus5
20.30	Bus5	Bus6	Bus6	Bus5	Bus5	Bus6
21.00	Bus6	Bus5	Bus5	Bus6	Bus6	Bus5
21.30	Bus5	Bus6	Bus6	Bus5	Bus5	Bus6
22.00	Bus6	Bus5	Bus5	Bus6	Bus6	Bus11, Bus12, Bus13, Bus14 (Team), Bus5
22.30	Bus5	Bus6	Bus6	Bus5	Bus5	Bus6
23.00		Bus7, Bus8 (Team), Bus5		Bus7, Bus8 (Team), Bus6		Bus13, Bus14 (Team), Bus5

Line G: Athletes' Village- (Olympic Arena)Stadium (Ice Hockey) Bus: 44+1 Capacity MD: 26+1 Capacity Bus5 and Bus 6 will provide transportation service between the Athletes' Village and Olympic Arena.

Ice Hockey					
04.02.2011		05.02.2011		06.02.2011	
Athletes' Village	Venues	Athletes' Village	Venues	Athletes' Village	Venues
		Bus1, Bus2 (Team)			
Bus1, Bus2 (Team), Bus5		Bus5			
Bus6	Bus5	Bus6	Bus5	Bus1, Bus2, Bus3, Bus4, Bus7, Bus8, Bus9 (Team)	
Bus3, Bus4 (Team), Bus5	Bus6	Bus3, Bus4 (Team), Bus5	Bus6	Bus5	
Bus6	Bus5	Bus6	Bus5	Bus6	Bus5
Bus5	Bus6	Bus7, Bus8 (Team), Bus5	Bus6	Bus5	Bus6
Bus6	Bus5	Bus6	Bus5	Bus6	Bus5
Bus5	Bus5	Bus5	Bus6	Bus5	Bus6
Bus6	Bus5	Bus6	Bus5	Bus6	Bus5
Bus7, Bus8 (Team), Bus5	Bus6	Bus5	Bus1, Bus2 (Team), Bus6	Bus10, Bus11, Bus12, Bus13, Bus14, Bus19, Bus20 (Team), Bus5	Bus6
Bus6	Bus5	Bus6	Bus5	Bus6	Bus5
Bus9, Bus10 (Team), Bus5	Bus6	Bus9, Bus10 (Team), Bus5	Bus6	Bus5	Bus6
Bus6	Bus1, Bus2 (Team), Bus5	Bus11, Bus12 (Team), Bus6	Bus5	Bus6	Bus5
Bus5	Bus6	Bus5	Bus6	Bus5	Bus1, Bus2, Bus3, Bus4, Bus7, Bus8, Bus9 (Team), Bus6
Bus6	Bus3, Bus4 (Team), Bus5	Bus6	Bus3, Bus4 (Team), Bus5	Bus6	Bus5
Bus5	Bus6	Bus5	Bus6	Bus5	Bus6
Bus6	Bus5	Bus6	Bus7, Bus8 (Team), Bus5	Bus6	Bus5
Bus11, Bus12 (Team), Bus5	Bus6	Bus5	Bus6	Bus5	Bus6
Bus6	Bus5	Bus6	Bus5	Bus6	Bus5
Bus13, Bus14 (Team), Bus5	Bus6	Bus13, Bus14, Bus19, Bus20 (Team), Bus5	Bus6	Bus5	Bus6
Bus6	Bus7, Bus8 (Team), Bus5	Bus6	Bus5	Bus6	Bus10, Bus11, Bus12, Bus13, Bus14, Bus19, Bus20 (Team), Bus5
Bus5	Bus6	Bus5	Bus6	Bus5	Bus6
Bus6	Bus9, Bus10 (Team), Bus5	Bus6	Bus9, Bus10 (Team), Bus5	Bus6	Bus5
Bus5	Bus6	Bus5	Bus11, Bus12 (Team), Bus6	Bus5	Bus6
Bus6	Bus5	Bus6	Bus5		Bus5
Bus5	Bus6	Bus5	Bus6		
Bus6	Bus5	Bus6	Bus5		
Bus5	Bus6	Bus5	Bus6		
Bus6	Bus11, Bus12 (Team), Bus5	Bus6	Bus5		
Bus5	Bus6	Bus5	Bus6		
	Bus13, Bus14 (Team), Bus5		Bus13, Bus14, Bus19, Bus20 (Team), Bus5		

- Vehicle allocation for technicians who will be in the venues at the wee hours will be provided in accordance with their requests.
- If any additional vehicle need arises for team sports, vehicle allocation will be provided from the vehicle pool.

6. Transportation for the Opening and Closing Ceremonies

Transportation Committee will apply a special plan for opening and closing ceremonies. Accordingly, FISU Chairman, Deputies of FISU Chairman and Executive Committee will go to these ceremonies by the vehicles allocated for them, and the other accredited guests will be carried by Buses from accommodation areas. Transportation will be provided by Buses for the local people. Additionally, transportation of delegations will be provided by Buses from Athletes' Village according to the programmes.

- Ice Hockey teams will be transported to stadium for the Opening Ceremony after the end of the competitions.

7. Traffic Control and Transportation Security

The police and the Traffic Flow Committee will serve best in the city for providing a good traffic flow during the competitions. The essential junction points in the city will be pedestrianised by putting police patrol cars if any need arises. There have been formed subunits in residential areas, highways of the region and rural areas belonging to this committee.

- Road safety at the transportation routes will be maintained consistently during the competitions.
- Arrangements and Works on necessary guide signs, white lines and all the traffic lines have been carried out for a healthy transportation.
- No driver will drink and drive during the competitions. Drivers who violate this rule will be disqualified from traffic immediately. No driver who is not accredited will be able to drive a car.
- All the crossroads and medians will be controlled by traffic police. If it is necessary, escorts are also given.
- Around the training and competition venues, parking styles which prevent vehicle and on-foot traffic of participants will not be allowed by traffic police.
- The activities such as traffic signs, the coordination of the lights, tow truck services, snow removing, operating the parking areas will be coordinated by Police Department, Erzurum Metropolitan Municipality and Region Directorate of Highways.
- Some Precautions will be taken such as road block and changing

routes to provide transportations of the participants and circulation of their vehicles around the venues where opening and closing ceremonies and the final Competitions will be held.

- Security staffs will take place in the vehicles and the road security of inner-city and upstate routes will be provided by police and military police units.
- Before the beginning of Winter Universiade, Erzurum 2011 OC Security Committee will control all the vehicles, which will be used during the competitions, for providing best working conditions. Besides, it will train all the drivers who will be at security and protocol departments.
- The followings are the conditions which will invalidate the Transportation Insurance Service:
 - Driving on purpose or carelessly,
 - Driving while being intoxicated (police can make the cars of drivers who has not got any license stopped. Licenses need to be identified by Turkish Republic government for providing insurance service.)
 - Overloaded vehicles, (Vehicles cannot carry passengers more than the passengers who fasten safety belts.)
 - All the penalties and fees caused by drivers' faults are individual responsibilities of the driver.
 - All the vehicles provided by Erzurum OC including Rate Card must be driven by the drivers allocated by Erzurum 2011 OC. It is prohibited to drive cars for delegation members.

TRANSPORTATION SERVICES for REFEREES & JUDGES

1. Transportation Services for Referees and Judges
2. Transportation Services
3. Arrivals
4. Principles of Transportation Services
5. Transportation for Opening & Closing Ceremonies
6. Departures
7. Transportation Schedule for Referees and Judges

1. Transportation Services for Referees and Judges

Erzurum OC will allocate vehicles for the transportation of referees and judges. In accordance with the competition schedule, 10 miniBuses, 2 small trucks, 5 cars and 2 panel vans will be allocated for referees and judges.

2. Transportation Services:

- Dedicated transportation services from hotels to competition venues,
- Transportation for opening and closing ceremonies from hotels to Cemal Gürsel Stadium,
- Transportation services depending on requests from hotels to venues of official activities,
- Transportation services from hotels to city Bus terminal and train station.

3. Arrivals

Umpires will be transferred to Athletes' Village for accreditation services depending on their arrivals. After their accreditation procedures are completed, they will be transported to the hotels where they will accommodate.

Transportation is approximately 30 minutes from the Athletes' Village to hotels.

4. Principles of Transportation Services

Transportation Committee will be responsible for providing free charge of transportation of umpires who arrive before January 27th-February 6th from Erzurum Airport, City Bus Terminal and Erzurum Train Station to related hotels.

Vehicles will be allocated for the referees and judges who will accommodate in hotels. These vehicles will serve between the Athletes' Village and competition venues during the competitions. Transportation Services will be served for the other activities out of competitions depending on request. These requests need to be reported to Transportation Desks 24 hours in advance.

5. Transportation Services for the Opening and Closing Ceremonies

Opening Ceremony will be held on January 27th, 2011 at 19.30 and Closing Ceremony will be held on February 06th, 2011 at 19.30 All the referees and judges will be transported by allocated vehicles from the hotels to the stadium for Opening and Closing Ceremonies.

6. Departures

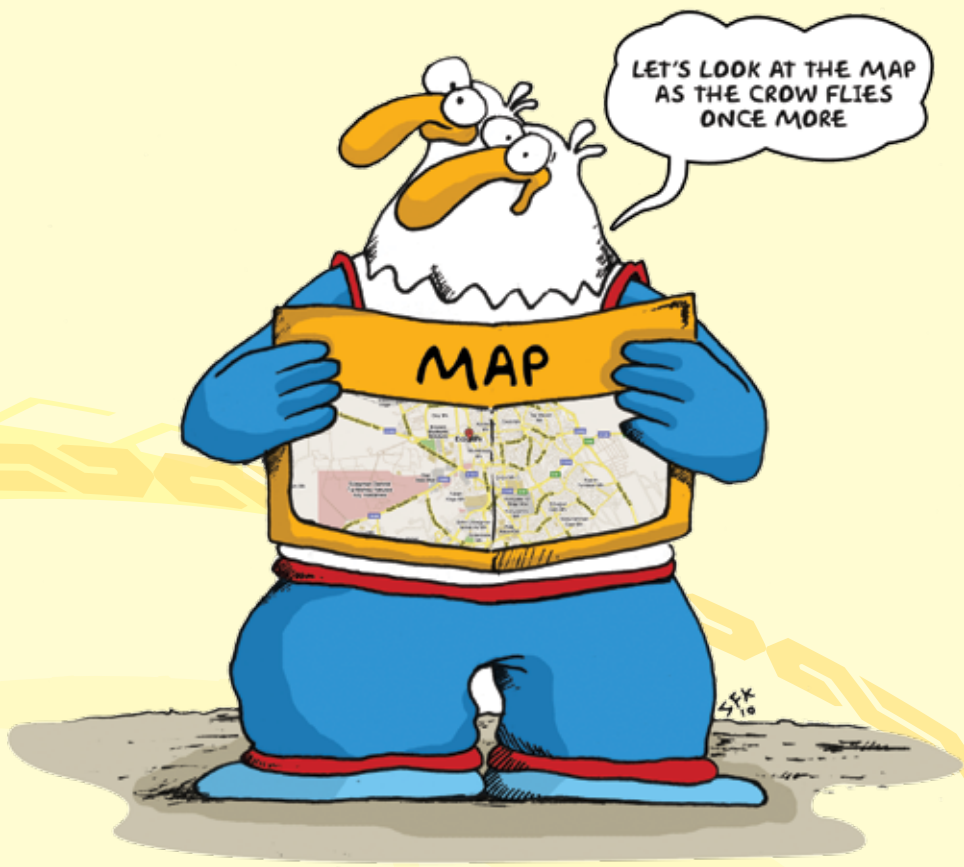
Transportation services from umpires' hotels to airport will be provided during the competitions. Umpire groups should fill in a "Transportation Request Form" and submit it to the transportation desks 24 hours in advance.

Transportation desks in hotels will provide the information about this point.

Luggage will be carried on the same vehicle of the passengers in principle. But if any need arises, a separate luggage transport vehicle may be assigned.

7. Transportation Schedule for Referees and Judges

- Transportation Desks will be established in every hotel of referees and judges.



LET'S LOOK AT THE MAP
AS THE CROW FLIES
ONCE MORE

Transportation Plan of Referees and Judges							
	Date/ Time	26.01.2011		27.01.2011		28.01.2011	
		Umpire Hotel	Venue	Umpire Hotel	Venue	Umpire Hotel	Venue
Curling	07.30	M20, T1		M20, T1		M20, T1	Return From Competition
	09.15	M21, T2		M21, T2			
	10.30		M20, T1		M20, T1		
	11.30	M20, T1		M20, T1			
	12.00		M21, T2		M21, T2	M20, M21, T1, T2	Return From Competition
	12.30						
	13.30	M21, T2		M21, T2			
	14:30		M20, T1		M20, T1		
	16.30		M21, T2		M21, T2		
	17.30					M21, T2	Return From Competition
Short Track	07.30	M23, M24, T3, T4		M23, M24, T3, T4			
	12.30					M23, M24, T3, T4	
	16.00				M23, M24, T3, T4		
	18.00						
	19.00		M23, M24, T3, T4				M23, M24, T3, T4
Figure Skating	06.00						
	07.00						
	08.00						
	08.30						
	09.00						
	11.00						
	11.30						
	12.00						
	12.30						
	14.00						
	14.30						
	15.00						
	15.30						
	16.00						
18.00							
23.00							
Snowboarding	08.30					M27, T7	
	09.00						
	09.30						
	10.30						
	11.00			T7			
	11.30						
	13.00						M27, T7
	14.00						
	15.00						
Ice Hockey	07.00			M11, M12, T23, T24			
	09.00					M11, M12, T23, T24	
	20.00				M11, M12, T23, T24		
	23.00						M11, M12, T23, T24

The vehicles on the chart are allocated to referees and judges.

T: Car 4+1 Capacity M: MiniBus 17+1 Capacity

Transportation Plan of Referees and Judges					
29.01.2011		30.01.2011		31.01.2011	
Umpire Hotel	Venue	Umpire Hotel	Venue	Umpire Hotel	Venue
M20, T1	Return From Competition	M20, T1	Return From Competition	M20, T1	Return From Competition
M21, T2	Return From Competition	M21, T2	Return From Competition	M21, T2	Return From Competition
M20, T1	Return From Competition	M20, T1	Return From Competition	M20, T1	Return From Competition
M23, M24, T3, T4		M23, M24, T3, T4			
			M23, M24, T3, T4		
	M23, M24, T3, T4			M25, T5	
				M26, T6	
					M25, T5
		M25, M26, T5, T6			
				M25, T5	
					M26, T6
					M25, T5
			M25, M26, T5, T6	M26, T6	
				M25, T5	
					M26, T6
					M25, T5
				M26, T6	
				M25, T5	
				M25, M26, T5, T6	
				M25, M26, T5, T6	
					M25, M26, T5, T6
M27, T7				M27, M28, T7, T8	
		M27, T7			
M28, T8					
		M28, T8			
M27, T7			M27, T7		
	M28, T8				M27, M28, T7, T8
			M28, T8		
	M27, T7				
M11, M12, T23, T24		M11, M12, T23, T24		M11, M12, T23, T24	
	M11, M12, T23, T24		M11, M12, T23, T24		M11, M12, T23, T24

Transportation Plan of Referees and Judges							
	Date/Time	01.02.2011		02.02.2011		03.02.2011	
		Umpire Hotel	Venue	Umpire Hotel	Venue	Umpire Hotel	Venue
Curling	07.30	M20, T1	Return From Competition	M20, T1	Return From Competition	M20, T1	Return From Competition
	12.30	M21, T2	Return From Competition	M21, T2	Return From Competition	M21, T2	Return From Competition
	13.30						
	17.30	M20, T1	Return From Competition	M20, T1	Return From Competition	M20, T1	Return From Competition
Short Track							
Figure Skating	13.00	M25, T5					
	13.30			M25, T5		M25, T5	
	15.30	M26, T6	M25, T5				
	17.00				M25, T5		
	17.30						M25, T5
	18.30						
	19.00		M26, T6	M25, M26, T5, T6		M26, T6	
	20.00	M25, T5				M25, T5	
	20.30						M26, T6
23.00		M25, T5		M25, M26, T5, T6		M25, T5	
Snowboarding	08.30	M27, T7		M27, M28, T7, T8		M27, T7	
	09.00						
	10.30					M28, T8	
	11.00						
	11.30	M28, T8					
	12.00		M27, T7				M27, T7
	12.30					M27, M28, T7, T8	
	13.00				M27, M28, T7, T8		
	14.00						M28, T8
	15.00		M28, T8				
16.00						M27, M28, T7, T8	
Ice Hockey	07.00						
	09.00	M11, M12 T23, T24		M11, M12, T23, T24		M11, M12, T23, T24	
	20.00						
	23.00		M11, M12, T23, T24		M11, M12, T23, T24		M11, M12, T23, T24

The vehicles on the chart are allocated to referees and judges.

T: Car 4+1 Capacity M: MiniBus 17+1 Capacity

Transportation Plan of Referees and Judges					
04.02.2011		05.02.2011		06.02.2011	
Umpire Hotel	Venue	Umpire Hotel	Venue	Umpire Hotel	Venue
M20, T1	Return From Competition	M20, T1	Return From Competition		
		M21, T2	Return From Competition		
M21, T2	Return From Competition				
M25, T5					
		M25, M26, T5, T6			
	M25, T5				
			M25, M26, T5, T6		
M25, M26, T5, T6					
	M25, M26, T5, T6				
M27, T7		M27, T7		M27, T7 M28, T8	
M27, M28, T7, T8				M27, T7	M27, T7
	M27, T7		M27, T7		
				M28, T8	M27, M28, T7, T8
	M27, M28, T7, T8				
		M11, M12, T23, T24			
M11, M12, T23, T24				M11, M12, T23, T24	
					M11, M12, T23, T24
	M11, M12, T23, T24		M11, M12, T23, T24		

Transportation Plan of Referees and Judges					
	Date/ Time	26.01.2011		27.01.2011	
		Umpire Hotel	Venue	Umpire Hotel	Venue
Freestyle Skiing	08.00	M29, T9		M29, T9	
	10.00				
	11.30				
	12.00				
	13.00		M29, T9		M29, T9
	16.00				
Biathlon	07.30	M31, M32, T12, T11		M31, T11	
	08.30				
	10.30			M32, T12	
	12.00				M31, T11
	14.30				M32, T12
	15.00				
	15.30			M31, M32, T11, T12	
	16.30		M31, M32, T12, T11		
	19.00				M31, M32, T11, T12
Ski Jumping	07.00				
	09.00			M34, T14	
	09.30				
	11.30				M34, T14
	12.30			M35, T15	
	15.00				M35, T15
	15.30				
	16.30			M34, T14	
	19.30				M34, T14
	20.00				
Nordic Combined	07.00	M36, T16		M36, T16	
	11.00			M37, T17	
	12.00		M36, T16		M36, T16
	15.00			M36, T16	
	16.00				M37, T17
	18.00				M36, T16
Cross Country	07.00	M38, M39, T18, T19			
	07.30			M38, T18	
	09.00			M39, T19	
	10.00				
	11.30				M38, T18
	12.00				
	12.30				
	13.30			M38, T18	M39, T19
	16.00		M38, M39, T18, T19		
	17.00				
17.30				M38, T18	
Alpine Skiing	08.00			M41, T21	
	09.00				
	11.00				
	12.00				
	14.00				M41, T21
	15.00				

The vehicles on the chart are allocated to referees and judges.
T: Car 4+1 Capacity M: MiniBus 17+1 Capacity

Transportation Plan of Referees and Judges							
28.01.2011		29.01.2011		30.01.2011		31.01.2011	
Umpire Hotel	Venue	Umpire Hotel	Venue	Umpire Hotel	Venue	Umpire Hotel	Venue
M29, T9							
M30, T10							
	M29, T9						
M29, T9							
	M30, T10						
	M29, M30, T9, T10						
M31, T11		M31, T11		M31, T11		M31, T11	
		M32, T12					
M32, T12				M32, T12		M32, T12	
	M31, T11				M31, T11		M31, T11
	M32, T12		M31, M32, T11, T12				
					M32, T12		M32, T12
M31, M32, T11, T12							
	M31, M32, T11, T12						
				M34, T14			
M34, T14							
					M34, T14		
	M34, T14						
M34, M35, T14, T15							
		M34, M35, T14, T15				M34, M35, T14, T15	
	M34, M35, T14, T15		M34, M35, T14, T15				M34, M35, T14, T15
M36, T16		M36, T16		M36, T16		M36, T16	
	M36, T16	M37, T17	M36, T16	M37, T17	M36, T16	M37, T17	M36, T16
M37, T17							
	M37, T17	M36, T16	M37, T17		M37, T17	M36, T16	
			M36, T16				M37, T17 M36, T16
M38, T18		M38, T18				M38, T18	
M39, T19				M38, T18			
		M39, T19				M39, T19	
	M38, T18		M38, T18				M38, T18
M40, T20							
	M39, T19				M38, T18		
M38, T18			M39, T19	M39, T19			M39, T19
	M40, T20						
	M38, T18				M39, T19		
M41, T21		M41, T21		M41, T21		M41, T21	
M42, T22		M42, T22					
						M42, T22	
	M41, T21		M41, T21				
	M42, T22		M42, T22		M41, T21		M41, T21
							M42, T22

Transportation Plan of Referees and Judges							
	Date/ Time	01.02.2011		02.02.2011		03.02.2011	
		Umpire Hotel	Venue	Umpire Hotel	Venue	Umpire Hotel	Venue
Freestyle Skiing	07.30			M29, M30, T9, T10		M29, M30, T9, T10	
	12.30				M29, M30, T9, T10		M29, M30, T9, T10
	13.00						
	14.00						
	15.30	M29, T9				M29, M30, T9, T10	
	18.30						M29, M30, T9, T10
Biatlhon	07.30	M31, T11		M31, T11		M31, M32, T11, T12	
	08.30	M32, T12		M32, T12			
	09.30			M33, T13			
	10.00		M31, T11		M31, T11		
	10.30	M33, T13				M33, T13	
	11.00			M31, T11	M32, T12		
	11.30	M31, T11	M32, T12				M31, M32, T11, T12
	12.00				M33, T13		
	13.00		M33, T13				
	14.00				M31, T11		
	14.30						M33, T13
	16.00		M31, T11				
	Ski Jumping	15.30	M34, M35, T14, T15		M34, M35, T14, T15		M34, M35, T14, T15
20.00			M34, M35, T14, T15		M34, M35, T14, T15		M34, M35, T14, T15
Nordic Combined	07.00	M36, T16					
	11.00	M37, T17	M36, T16				
	14.30		M37, T17				
Cross Country	07.30	M38, T18		M38, T18		M38, T18	
	09.00			M39, T19			
	09.30						
	11.30				M38, T18		M38, T18
	12.00			M40, T20			
	12.30		M38, T18				
	13.00				M39, T19		
	13.30	M39, T19		M38, T18			
	14.30						
	17.00				M40, T20		
Alpine Skiing	07.00					M40, T21	
	08.00	M40, T21		M40, M41, T21, T22			
	11.00	M41, T22				M41, T22	
	14.00		M40, T21		M40, M41, T21, T22		M40, T21
	15.00		M41, T22				M41, T22

The vehicles on the chart are allocated to referees and judges.

T: Car 4+1 Capacity

M: Minibus 17+1 Capacity

Transportation Plan of Referees and Judges					
04.02.2011		05.02.2011		06.02.2011	
Umpire Hotel	Venue	Umpire Hotel	Venue	Umpire Hotel	Venue
M29, M30, T9, T10		M29, M30, T9, T10			
	M29, M30, T9, T10				
			M29, M30, T9, T10		
M29, M30, T9, T10					
	M29, M30, T9, T10				
M31, M32, T11, T12		M31, M32, T11, T12			
M33, T13		M33, T13			
	M31, M32, T11, T12		M31, M32, T11, T12		
			M33, T13		
	M33, T13				
M38, M39, T18, T19		M38, T18			
		M39, T19			
			M38, T18		
	M38, M39, T18, T19				
			M39, T19		
M38, T18					
	M38, T18				
M40, T21		M40, T21		M40, T21	
M41, T22		M41, T22		M41, T22	
	M40, T21		M40, T21		M40, T21
	M41, T22		M41, T22		M41, T22

TRANSPORTATION SERVICES for MEDIA MEMBERS

1. Transportation Services for Media Members
2. Main Transportation Points
3. Transportation Information
4. Departures
5. Transportation Schedule for Media Members

1. Transportation Services for Media Members

Circuit services from accommodation areas to Athletes' Village and Media Center will be provided in every 30 minutes for media members. Shuttle services from Media Hotel to all venues will be provided before the beginning of competitions. Transportation from Erzurum Airport, City Bus Terminal and Erzurum Train Station to Universiade Media Center (UMC); from Media Center to the official competition areas (Athletes' Village, competition venues...) and accommodation areas will be provided by Buses.

2. Main Transportation Places

- Greeting and transportation services from Erzurum Airport, City Bus Terminal and Erzurum Train Station to Media Center,
- Shuttle Buses from Media Center to accommodation places (to hotel designated for Media Members),
- Shuttle Buses from Media Center to competition venues,
- Transportation services from Athletes' Village to Stadium for Opening and Closing Ceremonies.

3. Transportation Information

Transportation Info Desks will supply information about transportation. Interpreters will be ready for informing the guests about the points such as plans of transportation services.

4. Departures

Transportation services from Media Hotel to the airport will be provided during the competitions. Media groups who wish to leave should fill in a "Transportation Request Form" and submit it to the transportation desks 24 hours in advance.

Luggage will be carried on the same vehicle of the passengers in principle. But if any need arises, a separate luggage transportation vehicle may be assigned.

5. Transportation Schedule for Media Members

Date/ Time	Media Hotel-Athletes' Village											
	26.01.2011		27.01.2011		28.01.2011		29.01.2011		30.01.2011		31.01.2011	
	Media Hotel	Athletes' Village	Media Hotel	Athletes' Village	Media Hotel	Athletes' Village	Media Hotel	Athletes' Village	Media Hotel	Athletes' Village	Media Hotel	Athletes' Village
06.00	Bus15		Bus15		Bus15		Bus15		Bus15		Bus15	
06.30	Bus16	Bus15	Bus16	Bus15	Bus16	Bus15	Bus16	Bus15	Bus16	Bus15	Bus16	Bus15
07.00	Bus15	Bus16	Bus15	Bus16	Bus15	Bus16	Bus15	Bus16	Bus15	Bus16	Bus15	Bus16
07.30	Bus16	Bus15	Bus16	Bus15	Bus16	Bus15	Bus16	Bus15	Bus16	Bus15	Bus16	Bus15
08.00	Bus15	Bus16	Bus15	Bus16	Bus15	Bus16	Bus15	Bus16	Bus15	Bus16	Bus15	Bus16
08.30	Bus16	Bus15	Bus16	Bus15	Bus16	Bus15	Bus16	Bus15	Bus16	Bus15	Bus16	Bus15
09.00	Bus15	Bus16	Bus15	Bus16	Bus15	Bus16	Bus15	Bus16	Bus15	Bus16	Bus15	Bus16
09.30	Bus16	Bus15	Bus16	Bus15	Bus16	Bus15	Bus16	Bus15	Bus16	Bus15	Bus16	Bus15
10.00	Bus15	Bus16	Bus15	Bus16	Bus15	Bus16	Bus15	Bus16	Bus15	Bus16	Bus15	Bus16
10.30	Bus16	Bus15	Bus16	Bus15	Bus16	Bus15	Bus16	Bus15	Bus16	Bus15	Bus16	Bus15
11.00	Bus15	Bus16	Bus15	Bus16	Bus15	Bus16	Bus15	Bus16	Bus15	Bus16	Bus15	Bus16
11.30	Bus16	Bus15	Bus16	Bus15	Bus16	Bus15	Bus16	Bus15	Bus16	Bus15	Bus16	Bus15
12.00	Bus15	Bus16	Bus15	Bus16	Bus15	Bus16	Bus15	Bus16	Bus15	Bus16	Bus15	Bus16
12.30	Bus16	Bus15	Bus16	Bus15	Bus16	Bus15	Bus16	Bus15	Bus16	Bus15	Bus16	Bus15
13.00	Bus15	Bus16	Bus15	Bus16	Bus15	Bus16	Bus15	Bus16	Bus15	Bus16	Bus15	Bus16
13.30	Bus16	Bus15	Bus16	Bus15	Bus16	Bus15	Bus16	Bus15	Bus16	Bus15	Bus16	Bus15
14.00	Bus15	Bus16	Bus15	Bus16	Bus15	Bus16	Bus15	Bus16	Bus15	Bus16	Bus15	Bus16
14.30	Bus16	Bus15	Bus16	Bus15	Bus16	Bus15	Bus16	Bus15	Bus16	Bus15	Bus16	Bus15
15.00	Bus15	Bus16	Bus15	Bus16	Bus15	Bus16	Bus15	Bus16	Bus15	Bus16	Bus15	Bus16
15.30	Bus16	Bus15	Bus16	Bus15	Bus16	Bus15	Bus16	Bus15	Bus16	Bus15	Bus16	Bus15
16.00	Bus15	Bus16	Bus15	Bus16	Bus15	Bus16	Bus15	Bus16	Bus15	Bus16	Bus15	Bus16
16.30	Bus16	Bus15	Bus16	Bus15	Bus16	Bus15	Bus16	Bus15	Bus16	Bus15	Bus16	Bus15
17.00	Bus15	Bus16	Bus15	Bus16	Bus15	Bus16	Bus15	Bus16	Bus15	Bus16	Bus15	Bus16
17.30	Bus16	Bus15	Bus16	Bus15	Bus16	Bus15	Bus16	Bus15	Bus16	Bus15	Bus16	Bus15
18.00	Bus15	Bus16	Bus15	Bus16	Bus15	Bus16	Bus15	Bus16	Bus15	Bus16	Bus15	Bus16
18.30	Bus16	Bus15	Bus16	Bus15	Bus16	Bus15	Bus16	Bus15	Bus16	Bus15	Bus16	Bus15
19.00	Bus15	Bus16	Bus15	Bus16	Bus15	Bus16	Bus15	Bus16	Bus15	Bus16	Bus15	Bus16
19.30	Bus16	Bus15	Bus16	Bus15	Bus16	Bus15	Bus16	Bus15	Bus16	Bus15	Bus16	Bus15
20.00	Bus15	Bus16	Bus15	Bus16	Bus15	Bus16	Bus15	Bus16	Bus15	Bus16	Bus15	Bus16
20.30	Bus16	Bus15	Bus16	Bus15	Bus16	Bus15	Bus16	Bus15	Bus16	Bus15	Bus16	Bus15
21.00	Bus15	Bus16	Bus15	Bus16	Bus15	Bus16	Bus15	Bus16	Bus15	Bus16	Bus15	Bus16
21.30	Bus16	Bus15	Bus16	Bus15	Bus16	Bus15	Bus16	Bus15	Bus16	Bus15	Bus16	Bus15
22.00	Bus15	Bus16	Bus15	Bus16	Bus15	Bus16	Bus15	Bus16	Bus15	Bus16	Bus15	Bus16
22.30	Bus16	Bus15	Bus16	Bus15	Bus16	Bus15	Bus16	Bus15	Bus16	Bus15	Bus16	Bus15
23.00	Bus15	Bus16	Bus15	Bus16	Bus15	Bus16	Bus15	Bus16	Bus15	Bus16	Bus15	Bus16
23.30	Bus16	Bus15	Bus16	Bus15	Bus16	Bus15	Bus16	Bus15	Bus16	Bus15	Bus16	Bus15
00.00	Bus15	Bus16	Bus15	Bus16	Bus15	Bus16	Bus15	Bus16	Bus15	Bus16	Bus15	Bus16
00.30		Bus15		Bus15		Bus15		Bus15		Bus15		Bus15

There will be regular Bus services from Media Hotel to Athletes' Village. Bus: 44+1 Capacity

		Media Hotel-Venues											
		26.01.2011		27.01.2011		28.01.2011		29.01.2011		30.01.2011			
Time/Date	Media Hotel	Venues	Media Hotel	Venues	Media Hotel	Venues	Media Hotel	Venues	Media Hotel	Venues	Media Hotel	Venues	Venues
Curling	08.00	MD30	MD30	MD30	MD30	MD30	MD30	MD30	MD30	MD30	MD30	MD30	MD30
	12.00	MD31	MD31	MD31	MD31	MD31	MD31	MD31	MD31	MD31	MD31	MD31	MD31
	19.00	MD31	MD31	MD31	MD31	MD31	MD31	MD31	MD31	MD31	MD31	MD31	MD31
Short Track	08.00	MD32, MD33	MD32, MD33	MD32, MD33	MD32, MD33	MD32, MD33	MD32, MD33	MD32, MD33	MD32, MD33	MD32, MD33	MD32, MD33	MD32, MD33	MD32, MD33
	13.00			MD32, MD33									
	16.00			MD32, MD33									
Figure Skating	08.00							MD32, MD33				MD32, MD33	MD32, MD33
	12.00												
	23.00												
Freestyle Skating	08.00	MD32, MD33	MD32, MD33	MD32, MD33	MD32, MD33	MD32, MD33	MD32, MD33	MD32, MD33	MD32, MD33	MD32, MD33	MD32, MD33	MD32, MD33	MD32, MD33
	12.00												
	13.00												
Nordic Combined	16.00			MD32, MD33									
	19.00			MD32, MD33									
	23.00												
Cross Country	07.00	MD34, MD35	MD34, MD35	MD34, MD35	MD34, MD35	MD34, MD35	MD34, MD35	MD34, MD35	MD34, MD35	MD34, MD35	MD34, MD35	MD34, MD35	MD34, MD35
	17.00	MD34, MD35	MD34, MD35	MD34, MD35	MD34, MD35	MD34, MD35	MD34, MD35	MD34, MD35	MD34, MD35	MD34, MD35	MD34, MD35	MD34, MD35	MD34, MD35
	17.00	MD34, MD35	MD34, MD35	MD34, MD35	MD34, MD35	MD34, MD35	MD34, MD35	MD34, MD35	MD34, MD35	MD34, MD35	MD34, MD35	MD34, MD35	MD34, MD35
Alpine Skiing	08.00		MD35	MD35	MD35	MD35	MD35	MD35	MD35	MD35	MD35	MD35	MD35
	15.00			MD36									
	15.00			MD36									
Snowboarding	08.00			MD37									
	13.00			MD37									
	15.00			MD37									
Ski Jumping	09.00		MD38	MD38	MD38	MD38	MD38	MD38	MD38	MD38	MD38	MD38	MD38
	11.30		MD38	MD38	MD38	MD38	MD38	MD38	MD38	MD38	MD38	MD38	MD38
	13.00		MD38	MD38	MD38	MD38	MD38	MD38	MD38	MD38	MD38	MD38	MD38
Ice Hockey	20.00												
	07.00	MD39	MD39	MD39	MD39	MD39	MD39	MD39	MD39	MD39	MD39	MD39	MD39
	08.00												
	10.00			MD39									
	18.30			MD39									
	22.00			MD39									
22.30		MD39	MD39	MD39	MD39	MD39	MD39	MD39	MD39	MD39	MD39	MD39	

LISTED VEHICLES ARE ASSIGNED TO THE MEDIA MEMBERS AT 25.01.2010 MD: Midibus 26+1 Capacity Nordic Combined (Kandilli)

Media Hotel-Venues												
Time/ Date	01.02.2011		02.02.2011		03.02.2011		04.02.2011		05.02.2011		06.02.2011	
	Media Hotel	Venues	Media Hotel	Venues	Media Hotel	Venues	Media Hotel	Venues	Media Hotel	Venues	Media Hotel	Venues
Curling	08.00	MD30	MD30	MD30	MD30	MD30	MD30	MD30	MD30	MD30	MD30	
	12.00	MD31	MD31	MD31	MD31	MD31	MD31	MD31	MD31	MD31	MD31	
	19.00		MD31		MD31		MD31		MD31		MD31	
Short Track	08.00											
	16.00											
Figure Skating	08.00	MD32	MD32	MD32	MD32	MD32	MD32	MD32	MD32	MD32	MD32	
	12.00	MD32, MD33	MD32	MD32, MD33	MD32	MD32	MD32, MD33	MD32	MD32, MD33	MD32	MD32	
	14.00		MD32, MD33		MD32, MD33		MD32, MD33		MD32, MD33		MD32, MD33	
Freestyle Skiing	08.00	MD32	MD32	MD32	MD32	MD32	MD32	MD32	MD32	MD32	MD32	
	12.00	MD32, MD33	MD32	MD32, MD33	MD32	MD32	MD32, MD33	MD32	MD32, MD33	MD32	MD32	
	14.00		MD32, MD33		MD32, MD33		MD32, MD33		MD32, MD33		MD32, MD33	
Nordic Combined	07.00	MD34, MD35	MD34, MD35	MD34, MD35	MD34, MD35	MD34, MD35	MD34, MD35	MD34, MD35	MD34, MD35	MD34, MD35	MD34, MD35	
	17.00	MD34, MD35	MD34, MD35	MD34, MD35	MD34, MD35	MD34, MD35	MD34, MD35	MD34, MD35	MD34, MD35	MD34, MD35	MD34, MD35	
	07.00	MD34, MD35	MD34, MD35	MD34, MD35	MD34, MD35	MD34, MD35	MD34, MD35	MD34, MD35	MD34, MD35	MD34, MD35	MD34, MD35	
Cross Country	07.00	MD34, MD35	MD34, MD35	MD34, MD35	MD34, MD35	MD34, MD35	MD34, MD35	MD34, MD35	MD34, MD35	MD34, MD35	MD34, MD35	
	17.00	MD34, MD35	MD34, MD35	MD34, MD35	MD34, MD35	MD34, MD35	MD34, MD35	MD34, MD35	MD34, MD35	MD34, MD35	MD34, MD35	
	07.00	MD34, MD35	MD34, MD35	MD34, MD35	MD34, MD35	MD34, MD35	MD34, MD35	MD34, MD35	MD34, MD35	MD34, MD35	MD34, MD35	
Biathlon	07.00	MD34, MD35	MD34, MD35	MD34, MD35	MD34, MD35	MD34, MD35	MD34, MD35	MD34, MD35	MD34, MD35	MD34, MD35	MD34, MD35	
	17.00	MD34, MD35	MD34, MD35	MD34, MD35	MD34, MD35	MD34, MD35	MD34, MD35	MD34, MD35	MD34, MD35	MD34, MD35	MD34, MD35	
	07.00	MD34, MD35	MD34, MD35	MD34, MD35	MD34, MD35	MD34, MD35	MD34, MD35	MD34, MD35	MD34, MD35	MD34, MD35	MD34, MD35	
Alpine Skiing	08.00	MD36	MD36	MD36	MD36	MD36	MD36	MD36	MD36	MD36	MD36	
	15.00	MD36	MD36	MD36	MD36	MD36	MD36	MD36	MD36	MD36	MD36	
	08.00	MD37	MD37	MD37	MD37	MD37	MD37	MD37	MD37	MD37	MD37	
Snowboarding	13.00		MD37		MD37		MD37		MD37		MD37	
	15.00		MD37		MD37		MD37		MD37		MD37	
	13.00		MD37		MD37		MD37		MD37		MD37	
Ski Jumping	16.00	MD38	MD38	MD38	MD38	MD38	MD38	MD38	MD38	MD38	MD38	
	20.00		MD38		MD38		MD38		MD38		MD38	
	07.00		MD39		MD39		MD39		MD39		MD39	
Ice Hockey	08.00	MD39	MD39	MD39	MD39	MD39	MD39	MD39	MD39	MD39	MD39	
	10.00											
	18.30											
	22.00		MD39		MD39		MD39		MD39		MD39	
	22.30		MD39		MD39		MD39		MD39		MD39	

MD: Midibus 26+1 Capacity Nordic Combined (Kandilli)

www.erzurum2011.gov.tr